

Showing Presence in New Era of
Ayurvedic Formulations





SBHERBALS® is marketing quality Ayurvedic/Patented Products in India. The company has a corporate office in Chandigarh. SBHERBALS® is managed by professionals who have a long experience and expertise in Herbal/Pharma Business.

We as a company are dedicated towards quality healthcare products with a vision towards enriching life & well being. We focus on achieving and surpassing the highest standard quality products through environment friendly practices.

We have a wide range of Ayurvedic Herbal Cosmetic products like Capsule, Softgel, Tablet, Syrup, Drop, Oil, Powder, Granule, Lotion, Cream, Spray, Sachet, Malt, Effervescent Tablet. We are dedicated to manufacture and market high quality products for various diseases that improve health & quality of our customers.

We take pride in our diverse and talented work force. We have an efficient marketing team and strong business alliances with state-of-the-art manufacturing facilities that are at par with international standards. All this is backed by a strong distribution network that has placed us amongst India's fast growing transnational healthcare company.

PAGE OF INDEX

PAIN, SCIATICA & MIGRAINE MANAGEMENT	1-2
FEMALE HEALTH	3-5
KIDS HEALTH	6
DIGESTION, ACID, IBS & PROSTATE CARE	7-9
DIABETES CARE	10
RESPIRATORY HEALTH	11
HEART CARE & BP CARE	12
PILES CARE	13
LIVER CARE	14
NERVOUS SYSTEM & VARICOSE VEINS	15
SKIN CARE, VITILGO, PSORIASIS, WART & BLOOD PURIFIER	16-17
MALE SEXUAL WELLNESS & INFERTILITY	18-19
UTI, KIDNEY STONE & KIDNEY CARE	20-21
URIC ACID & THYROID MANAGEMENT	22
ANXIETY & SLEEP DISORDER	23
DENTAL CARE	24
WEIGHT MANAGEMENT	25
EYE & EAR CARE	26
HAIR CARE	27
INFECTIONS, PLATELETS ENHANCER & ANTIBIOTICS	28
AYURVEDIC SOFTGELS	29-30
EFFERVESCENT TABLETS	31
HERBAL COSMETICS	32-33
AYURVEDIC JUICES	34-35
NUTRITION, IMMUNO MODULATOR & GENERAL HEALTH	36-37
DE-ADDICTION	38

PAIN, SCIATICA & MIGRAINE MANAGEMENT



PAINOFREE[®] CAPSULE

FOR QUICK RELIEF FROM JOINT PAIN, KNEE PAIN, BONE PAIN

राठिया, जोड़ों और मांसपेशियों में सूजन व दर्द के लिए लाभकारी

Each 500 mg capsule contains :
Guggal 150 mg, Shalaki 100 mg, Sunthi 100 mg, Turmeric 100 mg, Nirgundi 50 mg

Useful in :

Joint Pain, Muscle Pain, Strain Sprain, Knee Pain, Back Pain & Other Muscular Pain.

Dosage :

One capsule twice daily or as directed by the physician.

Pack : 10 x 10 Capsules
M.R.P. Rs. 1225.00



PAINOFREE[®] PAIN RELIEVER ROLL-ON

USEFUL IN SPRAINS & STRAINS, LOW BACK PAIN, MUSCULAR PAIN, JOINT PAIN

Composition :

Each 100ml contains :

Alsi Oil	5 ml	Pudina Oil	5 ml
Erand Oil	5 ml	Tarpin Oil	5 ml
Jyotimati Oil	2 ml	Gandhpurana Oil	10 ml
Nilgiri Oil	2 ml	Til Oil	61 ml
Kapoor	5 ml		

Useful in : Amavata, Sandhi Sotha, Sandhi Pida, Sotha, Urustambha, Vataroga.

Direction for use : Clean the affected area. Pore sufficient quantity of Painofree pain oil and massage gently till the oil is absorbed. Apply two or three times daily or as directed by the physician.

Pack : 50 ml M.R.P. Rs. 160.00



PAINOFREE[®] PAIN KILLER OIL

PAIN RELIEVING OIL जोड़ों के दर्द में लाभकारी

Composition :

Each ml. contains :

Gandhpura Oil 20.00%, Kapura 15.00%, Nilgiri oil 14.00%, Turpentine oil 11.00%, Aranda oil 5.00%, Arnica oil 5.00%, Ajowain oil 3.00%, Lemon Grass oil 2.50%, Pudina Phool 2.00% Til Oil q.s.

Useful in :

Joint Pain, Muscle Pain, Strain, Spain, Knee Pain, Back Pain & Other Muscular Pain.

Direction for use :

Apply 5-10 drops on affected area with gentle massage for a few minutes 2-3 times a day or as directed by physician.

Pack : 30 ml & 60 ml

M.R.P. 110.00

M.R.P. 160.00



PAINOFREE[®] PAIN RELIEVING HERBAL OINTMENT

जोड़ों के दर्द में लाभकारी

Composition :

Wintergreen Essential Oil 20%, Mint Flower Oil 5% Turpentine Oil 3%, Eucalyptus Oil 2%, Ointment q.s.

Useful in :

Painofree provides relief from Backache, Sprains, Strains, Joints & Muscle Pain, Myositis, Fibrositis, Sciatica.

Direction : Apply generously 3-4 times a day and massage gently.

Pack : 30 gm
M.R.P. Rs. 120.00



PAINOFREE[®] SYRUP REMEDY FOR JOINT & MUSCULAR PAINS

राठिया, जोड़ों और मांसपेशियों में सूजन व दर्द के लिए लाभकारी

Each 10ml contains :

Nirgundi 200 mg, Rasna 50 mg, Punernava 50 mg, Gokhru 50 mg, Shudh gugglu 50 mg, Shudh Shilajeet 50 mg, Ashwagandha 100 mg, Pippali mool 50 mg, Malkangni 50 mg, Haldi 150 mg, Shallaki 150 mg, Suranjan Moringa 150 mg, Trifla 50 mg, Sounth 100 mg, Kali Mirch 50 mg, Kounch Beej 50 mg, Hadjod 150 mg, Flavoured Syrupy base q.s.

Useful in :

Pain & stiffness of joints & muscles in arthritis, rheumatic disorders, neuralgia, post operative aches and pains, cervical spondylitis, backaches & leg cramps, frozen shoulders lumbago, sciatica, muscular pains.

Dosage : 1-2 teaspoonful twice a day or as directed by the physician.

Pack : 200ml. M.R.P. Rs. 180.00



BONESET[®] CAPSULE

USEFUL IN FRACTURE HEALING

फ्रेक्चर को जल्दी ठीक करने में लाभकारी

Each capsule contains extracts of :

Hadjod 375 mg
Ashwagandha 62.5 mg
Shallaki 62.5 mg

Benefits :

- Accelerates the healing of fractures
- Has anti-inflammatory properties

Dosage :

As directed by the physician.

Pack : 30 Capsules M.R.P. Rs. 390.00



PINGCAL CAPSULE

IMPROVES BONE HEALTH,
HELPFUL IN RELIEVING JOINT PAIN,
PROMOTES HEALTHY JOINTS
हड्डियों एवं जोड़ों की मजबूती के लिए

Composition :

Each capsule contains :

Guggul Salai ext. 100 mg, Guggul ext. 80 mg, Sonth ext. 80 mg, Surjan ext. 70 mg, Lahsun shuddha 40 mg, Haldi ext. 40 mg, Chamomile ext. 30 mg, Ashwagandha ext. 30 mg, Sat puspaa ext. 20 mg, Rasna ext. 10 mg

Dosage : Two capsules thrice a day with water after meal or as directed by the physician.

Pack : 10 x 1 x 10 Capsules
M.R.P. Rs. 1000.00



SCIAVIN TABLET FOR SCIATICA

FOR PAIN IN THE LOWER BACK,
HIPS & LEGS

साइटिका (Pinched Nerve) और
कमर दर्द में उपयोगी

Each tablet contains :

Ashwagandha (Withania somnifera)	Root	100 mg
Salakai (Boswellia serrata)	Resin	100 mg
Nirgundi (Vitex negundo)	Leaves	90 mg
Suranjani (Colchicum luteum)	Rhizome	60 mg
Saunth (Zingiber officinale)	Rhizome	50 mg
Rasna (Pluchea lanceolata)	Leaves	50 mg
Parijat (Nyctanthes arboritica)	Leaves	50 mg
Shilajit (Asphaltum punjabium)	Resin	40 mg
Guggul (Commiphora mukul)	Resin	30 mg
Haldi (Curcuma longa)	Rhizome	20 mg
Punarnava (Boerhavia diffusa)	Root	20 mg
Brahmi (Bacopa monnieri)	Panchang	20 mg
Amla (Embellica officinalis)	Fruit	10 mg
Dalchini (Cinnamomum zeylanicum)	Bark	40 mg
Excipients		q.s.

Useful in : Low Back Ache (Pain), Pain in the hips, thighs & flanks, Arthritis conditions, Muscle twitches and stiffness, Sciatica, IVDP, Lumbar Spondylosis, Muscular & Nervous degenerative conditions and Hemiplegia or paraplegia.

Dosage : 1 tablet twice daily or as directed by the physician.

Pack : 30 tablet M.R.P. Rs. 360.00



MIGRASET CAPSULE

NATURAL HERBS FOR
MIGRAINE & STRESS

माइग्रेन के दर्द में उपयोगी

Composition :

Each 500 mg Capsule contains:

Pathya (Terminalia chebula) Frt 83.33 mg
Akshya (Terminalia bellerica) Frt 83.33 mg
Dhatiri (Embellica officinale) Frt 83.33 mg
Bhunimba (Andrographis paniculata) WP 83.33 mg
Nisa (Curcuma longa) Rz 83.33 mg
Amrutha (Tinospora cordifolia) Stm 83.33 mg

Useful in :

Migraine, Stress & Headache

Dosage :

Two Capsules twice daily with luke warm water as directed by the physician.

Pack : 30 Capsules M.R.P. Rs. 370.00



RHUMI ACT LINIMENT

PAIN RELIEVING OIL

जोड़ों के दर्द में लाभकारी

Composition :

Each 10ml contains
Mahanarayan Tail 4.8 ml
Nirgundi Tail 4.0 ml
Gandhpurao Tail 0.5 ml
Deodar Tail 0.5 ml
Nilgiri Tail 0.2 ml

Useful in :

- Lower Back Pain • Sports Injuries • Spondylosis
- Knee Pain • Rheumatoid Arthritis • Sprains
- Strains • Osteoarthritis • Cervical and Lumbar issues
- Shoulder Pain • It helps reduce inflammation

Directions for use : Apply 5-10 drops on affected area with gentle massage for a few minutes 2-3 times a day or as directed by physician.

Pack : 100 ml M.R.P. Rs. 310.00



PINGCAL-C TABLET

CALCIUM TABLET
कैल्शियम की कमी में उपयोगी

Composition :

Each film coated tablet contains (approx.) :

Mukta Shuki Bhasma (Oyster Shell)	300 mg
Godanti Hartal Bhasma (Arsenic Trisulphidum)	100 mg
Khatika (Calcium Carbonate)	200 mg
Aspartame	4 mg
Excipients	q.s.

Recommended Usage :

One tablet daily after meal or as directed by the physician.

Pack : 60 tablet M.R.P. Rs. 420.00



PAINOFREE MR AYURVEDIC TABLET

A NATURAL
MUSCLE
RELAXANT

Each tablets contains:-

Shallaki Extract	400mg
Langli extract	10 mg
Rasna	50 mg
Nirgundi	50 mg
Shunthi	50 mg
Ashwagandha	40 mg

Useful in :

Joint Pain, Muscle Pain, Strain Sprain, Knee Pain, Back Pain & Other Muscular Pain.

Dosage : 1-2 Tablets twice daily after meal or as directed by the Physician.

Pack : 10 x 10 tablet M.R.P. Rs. 1300



PAINOFREE[®] CAPSULE

FOR QUICK RELIEF FROM
JOINT PAIN, KNEE PAIN,
BONE PAIN

गठिया, जोड़ों और मांसपेशियों में सूजन
व दर्द के लिए लाभकारी

Each 500 mg capsule contains :

Guggul 150 mg, Shalaki 100 mg, Sunthi 100 mg,
Turmeric 100 mg, Nirgundi 50 mg

Useful in :

Joint Pain, Muscle Pain, Strain Sprain, Knee Pain, Back Pain & Other Muscular Pain.

Dosage :

One capsule twice a day or as directed by the physician.

Pack : 30 Capsules
M.R.P. Rs. 370.00



PAINOFREE[®] POWDER

Herbal Formula for
Joint &
Muscular Pain

Each 10 g powder contains :

Sehjan (Moringa oleifera)	Leaf	1.5g
Triphala (Embellica officinalis, Terminalia chebula, Terminalia bellerica)	Fruit	1.5g
Rasna (Pluchea lanceolata)	Leaf	0.6g
Giloy (Tinospora cordifolia)	Stem	0.6g
Ashwagandha (Withania somnifera)	Root	0.6g
Vidhara (Argyrea nervosa)	Root	0.6g
Suranjani Meethi (Colchicum luteum)	Root	0.6g
Gokhru (Tribulus terrestris)	Fruit	0.6g
Daru Haldi (Curcuma wightii)	Root	0.4g
Ajowain (Picrothiza kurroa)	Root	0.3g
Ajowain (Carum copticum)	Seed	0.3g
Sunthi (Zingiber officinale)	Rhizome	0.3g
Rasunt (Salvia verticillata)	Leaf and Stem	0.3g
Mussabar (Aloe barbadensis miller)	Leaf (Gel)	0.3g
Shudh Kuchila (Strychnos nux-vomica)	Seed	0.3g
Khurasani (Hyoscyamus niger)	Whole Plant	0.3g
Asak (Calotropis gigantea)	Root	0.3g
Haldi (Curcuma longa)	Rhizome	0.3g
Sanay (Cassia angustifolia)	Leaf	1.5g

Useful in :

Joint & Muscular Pain

Usage :

One sachet twice a day with water or as directed by the physician.

Pack : 1 x 30 Sachet (3g each)
M.R.P. Rs. 600.00



FEMALE HEALTH



LEUCOSET™ SYRUP

FORMULA FOR
LEUCORRHOEA
श्वेत प्रदर में उपयोगी

Each 10 ml contains extract from :
Ashok 800 mg, Lodhar 500 mg, Dhaiphool 500 mg,
Shatavar 400 mg, Amla 400 mg, Gokhru 200 mg,
Ashwagandha 200 mg, Daruhaldi 100 mg,
Jatamansi 100 mg

Usage and Benefits :

Leucoset is an ayurvedic herbal product with no side effects. It cures and prevents the leucorrhoea and symptoms associated with it. It cures backache, burning sensation and keeps your energy level high.

DOSAGE

10 -20 ml of syrup twice a day with water after meal or as directed by the physician.

Pack : 200ml. M.R.P. Rs. 160.00



CYST-YOG™ CAPSULE

SPECIALLY FORMULATED FOR
DISSOLVING ANY TYPE OF CYST
IN OVARY, BREAST, UTERUS.

गर्भाशय में गांठ और स्तन की सूजन
तथा गांठ में उपयोगी

Composition :

Each capsule contains : Kanchanar (Bauhinia variegata) St Bk 60 mg, Haritaki (Terminalia chebula) Frt 12 mg, Bibhitaka (Terminalia bellerica) Frt 12 mg, Amalaki (Phyllanthus emblica) Frt 12 mg, Sunthi (Zingiber officinale) Rhz 6 mg, Marica (Piper nigrum) Frt 6 mg, Pippali (Piper longum) Frt 6 mg, Varuna (Crataeva nurvala) Stm Bk 6 mg, Ela (Eleteria cardamomum) Sd 1.5 mg, Tvak (Cinnamomum zeylanicum) 1.5 mg, Tejpatra (Cinnamomum tamala) Lv 1.5 mg, and Guggul (Commiphora wightii) Resin 124.5 mg, Shuddha Parad, Shuddha Gandhak, Loha Bhasma, Vanga Bhasma, Tamra Bhasma, Kansya Bhasma, Hartal Bhasma, Nila Thotha Bhasma, Shankh Bhasma, Kapardak (Kapardika) Bhasma, Sonth (Zingiber officinale) Rhz, Black Pepper (Piper nigrum) Frt, Long Pepper (Piper longum) Frt, Haritaki (Terminalia chebula) Frt, Amalaki (Emblcia officinalis) Frt, Chavya (Piper retrofractum) Frt, Kachur (Curcuma zedoaria) Rhz, Vaividang (Embelia ribes) Frt, Vidhara (Aryreia nervosa) Sd, Piplamool (Piper longum) Rt, Patha (Cissampelos pareira) Rt, Hauber (Juniperus communis) Frt, Vacha (Acorus calamus) Rhz, Cardamom (Elettaria cardamomum) Sd, Deodara (Cedrus deodara) Bk, Samudra Namak, Sendha Namak, Sambhar Namak, Vida Namak, Kala Namak 8 mg each

Useful in : Benign tumors, Cysts in ovary, breast & uterus, Lipoma, fibroid and breast swelling etc.
Useful in cysts in men.

Dosage : 1-2 capsules two times a day or as advised by the physician.

Pack : 30 capsule M.R.P. Rs. 460.00



CYST-YOG™ SYRUP

SPECIALLY FORMULATED FOR
DISSOLVING ANY TYPE OF CYST
IN OVARY, BREAST, UTERUS.

गर्भाशय में गांठ और स्तन की सूजन
तथा गांठ में उपयोगी

Each 10ml syrup contains aqua extracts of :

Ushba (Sariva)	Hemidesmus indicus	Rt	800 mg
Dhamasa	Fagonia arabica	W.P.	400 mg
Kachnar	Bauhinia variegata	Bk	400 mg
Majishta	Rubia cordifolia	Rt	400 mg
Saunf	Foeniculum vulgare	Sd	200 mg
Unnab	Zizyphusjijuba	Frt	250 mg
Sapistan	Cordiamyxa	Frt	125 mg
Hansraj	Adiantuminnulatum	W.P.	100 mg
Gajwan	Onosmabraceatum	W.P.	100 mg

Useful in : Benign tumors, Cysts in ovary, breast & uterus, Lipoma, fibroid and breast swelling etc.
Useful in cysts in men.

Dosage : 1-2 teaspoonful two times a day or as advised by the physician.

Pack : 200ml. M.R.P. Rs. 250.00



LEUCOSET CAPSULE

FOR LEUCORRHOEA
श्वेत प्रदर में सहायक

Composition :

Each hard gelatin capsule contains
Yashtimadhu 20 mg, Piplamool 20 mg,
Mochak 40 mg, Supari 20 mg, Nagkesar 20 mg,
Ashok chhal 20 mg, Dashmool 50 mg,
Jatamansi 20 mg, Triphala 40 mg, Shatavari
20 mg, Anantmool 20 mg, Chandan 10 mg,
Kaunch Beej 50 mg, Ashwagandha 50 mg,
Gokhru 50 mg, Lodhra 50 mg

Useful in :

Non Specific Leucorrhoea,
U.T.I., Backache.

Dosage : 1-2 capsules twice a day with water or milk or as advised by the physician.

Pack : 30 capsule M.R.P. Rs. 360.00



LEUCOSET CAPSULE

FOR LEUCORRHOEA
श्वेत प्रदर में सहायक

Composition :

Each hard gelatin capsule contains
Yashtimadhu 20 mg, Piplamool 20 mg, Mochak 40 mg, Supari 20 mg,
Nagkesar 20 mg, Ashok chhal 20 mg, Dashmool 50 mg, Jatamansi 20 mg,
Triphala 40 mg, Shatavari 20 mg, Anantmool 20 mg, Chandan 10 mg,
Kaunch Beej 50 mg, Ashwagandha 50 mg, Gokhru 50 mg, Lodhra 50 mg

Useful in :

Non Specific Leucorrhoea, U.T.I., Backache.

Dosage : 1-2 capsules twice a day with water or milk or as advised by the physician.

**Pack : 10 x 1 x 10 Capsules
M.R.P. Rs. 1200.00**



MENOACT CAPSULE

COMPLETE MENOPAUSE
SUPPORT FORMULA

मासिक धर्म बंद होने की स्थिति में होने वाले तनाव,
अचानक से गर्मी लगना, भावनात्मक परिवर्तन
आदि के प्रभाव को कम करने में सहायक

Composition :

Each capsule contains :

Yastimadhu ext. 80 mg, Soybean Ext. 80 mg, Alfalfa ext. 80 mg,
Aswagandha ext. 80 mg, Shatavari ext. 80 mg, Tagar ext. 100 mg

Useful in :

Hot flashes, night sweats, abnormal vaginal
bleeding, vaginal itching, dryness and pain,
stress, anxiety.

Dosage :

1 capsules thrice a day or
as directed by the physician.

**Pack : 10 x 1 x 10 Capsules
M.R.P. Rs. 1000.00**



SUPERBUST

BREAST ENHANCEMENT LOTION

Superbust Lotion contains aqua extracts of following herbs in lotion base (per 100ml) :

Til (Sesamum indicum), Gular (Ficus glomerata), Palash (Butea monosperma), Haridra (Terminalia chebula), Vacha (Acorus calamus), Neelkamal (Nymphaea alba), Bitter gourd (Lageraria vulgaris), Lodhra (Symplocos racemosa), Kusth (Saussurea lappa), Marica (Piper nigrum), Ashwagandha (Withania somnifera), 2 ml each

Useful in : Poorly developed, Saggy, Inelastic, Atrophic breasts or dry breast skin.

Applications : Use your finger tip to take liberal amount of Superbust Lotion for each breast. Apply and gently massage with your palm in circular motion and upward strokes for 3-4 minutes or till the lotion get fully absorbed. For best results use twice daily, right after a bath/shower since it is when the pores are open, which is necessary in order for the cream to be properly absorbed.

Pack : 100 ml M.R.P. Rs. 360.00

THE BEST AND NATURAL WAY TO FIRM UP SAGGING BREASTS AND ADD DEFINITION TO POORLY DEVELOPED BREASTS

ब्रेस्ट को सुडोल, सही आकार एवं टाईट बनाने में सहायक



V-BLESS

INTIMATE HYGIENE WASH

Each 100ml. made with:

Lodhra (*Symplocos racemosa*) Brk 2%
Karpasa (*Gossypium herbaceum*) Lv 2%
Badari (*Zizibus jujuba*) Sd 2%
Turmeric (*Curcuma longa*) Rhz 2%
Daru haridra (*Berberis aristata*) Ptl 2%
Base Q.S.

Useful in :

V-Bless Intimate Hygiene Wash is highly recommended to maintain hygiene in vaginal area, stay fresh & clean. It also prevents itching, bad odour, irritation & dryness.

Directions for use :

Pour a few drops onto your palm. Gently wash the external area of your vagina. Rinse with water once done.

Pack : 100 ml. M.R.P. Rs. 190.00

IMPROVES HYGIENE, PREVENTS ODOUR & ITCHING

इटिमेट हाइजिन वॉश



GYNAE ACT

SYRUP

Each 10ml contains aqueous derived from :-

Seraca indica 600 mg, Withania somnifera 300 mg, Cyperus rotundus 300 mg, Asparagus racemosus 150 mg, Quercus infectoria 150 mg, Terminalia chebula 150 mg, Terminalia bellerica 150 mg, Embilica officinalis 150 mg, Sida cordifolia 150 mg, Barberis aristata 300 mg, Curcuma zedoaria 300 mg, Punica granatum 300 mg, Asparagus adscendens 150 mg, Symplocos racemosa 300 mg, Sugar q.s., Preservatives, Colour & Flavours q.s.

Useful in :

Leucorrhoea, Abnormal vaginal discharge, Itching around the outside of the vagina, Urinary Tract Infections, White discharge, Yellow discharge, Irregular Menstruation

Dosage : 2 teaspoonful twice a day or as directed by the physician.

Pack : 200ml. M.R.P. Rs. 160.00

A COMPLETE UTERINE TONIC

स्त्रियों में खून की कमी, मासिक धर्म की समस्याओं एवं गर्भ ठहरने में उपयोगी, हार्मोन्स को संतुलित करने में सहायक



GYNAE ACT

SYRUP

Each 10ml contains aqueous derived from :-

Seraca indica 600 mg, Withania somnifera 300 mg, Cyperus rotundus 300 mg, Asparagus racemosus 150 mg, Quercus infectoria 150 mg, Terminalia chebula 150 mg, Terminalia bellerica 150 mg, Embilica officinalis 150 mg, Sida cordifolia 150 mg, Barberis aristata 300 mg, Curcuma zedoaria 300 mg, Punica granatum 300 mg, Asparagus adscendens 150 mg, Symplocos racemosa 300 mg, Sugar q.s., Preservatives, Colour & Flavours q.s.

Useful in :

Leucorrhoea, Abnormal vaginal discharge, Itching around the outside of the vagina, Urinary Tract Infections, White discharge, Yellow discharge, Irregular Menstruation

Dosage : 2 teaspoonful twice a day or as directed by the physician.

Pack : 450ml. M.R.P. Rs. 320.00

A COMPLETE UTERINE TONIC

स्त्रियों में खून की कमी, मासिक धर्म की समस्याओं एवं गर्भ ठहरने में उपयोगी, हार्मोन्स को संतुलित करने में सहायक



PCODSET

CAPSULE

MEDICINE FOR IRREGULAR PERIODS

असामान्य पीरियड्स में लाभकारी

Each capsule contains :-

Ashoka 150 mg, Shatavari 125 mg, Lodhra 100 mg, Shatpushpa 50 mg, Methika 50 mg, Kanchnar Guggulu 100 mg

Usage and Benefits :

PCODSET capsules are made from a mixture of herbs like Ashoka, Shatavari and Lodhra which support uterine health and controls discomforts associated with menstruation. Due to its antioxidant activity and ability to modulate the cellular response to stress, assists women to combat physical and emotional discomfort during menstruation.

Usage : 1 capsule twice daily with water or as advised by the physician.

Pack : 30 capsule M.R.P. Rs. 460.00



LACTOADD

GRANULES

FOR BREASTFEEDING MOTHERS

स्तनपान करवाने वाली महिलाओं में मां के दूध की मात्रा को बढ़ाने में सहायक

Composition :

Each 10gm granules contains :

Methi Ext. 800 mg, Shatavari Ext. 800 mg, Vidarikand Ext. 800 mg, Kamal beej Ext. 400 mg, Fennel Ext. 400 mg, Alfalfa Ext. 400 mg, Raspberry Ext. 400 mg, Stinging nettle Ext. 300 mg, Jeera Ext. 100 mg, Kalaunji Ext. 100 mg, Sucrose q.s.

Useful in : Beneficial for breastfeeding mothers, Promotes the production of breast milk, Helps to balance hormonal changes, Helps to normalize the uterus.

DOSAGE : Take two heaped teaspoonful and mix in a glass of milk, stir briskly and drink twice a day or as directed by the physician.

Pack : 200 gm M.R.P. Rs. 360.00



GYNAEACT PLUS

HERBAL UTERINE SYRUP

A COMPLETE CARE FOR WOMEN

मासिक धर्म की अनियमितता, मानसिक तनाव व भ्रूव में कमी, शारीरिक कमजोरी, श्वेत प्रदर में उपयोगी।

Composition :

Each 10ml contains :

Aashokarishta 2ml
Lodhrasava 2ml
Dashmularishta 2ml
Pantrangasava 2ml
Ashwagandharishta 1ml
Lohasava 1ml
Hirabol 5mg
Sugar q.s.

Useful in :

Effective in Leucorrhoea, Backache, Pelvic-Pain, Irregular Menstrual Cycle, General Weakness.

Dosage : 2 teaspoonful twice a day or as directed by the physician.

Pack : 300ml. M.R.P. Rs. 320.00



SBRON PLUS

IRON BOOSTER TABLET

BOOSTS HAEMOGLOBIN BOOSTS IMMUNITY INCREASES METABOLISM

पाण्डू रोग (खून की कमी) कृपोषण एवं सामान्य दुर्बलता में उपयोगी

Composition

Each tablet contains :

Tapayadi Loh..... 60 mg
Navayas Loh..... 80 mg
Dhatri Loh..... 60 mg
Loh Bhasma..... 150 mg
Mandoor Bhasma..... 100 mg
Prawal Pishti..... 50 mg

Indications :

• Iron deficiency / Anaemia • Nutritional Deficiency
• Body Weakness • Weakness during pregnancy & lactation
• Menstrual disorders in women • Unusual weight loss

Recommended Usage :

One or two tablets daily after meal or as directed by the physician.

Pack : 60 Tablets M.R.P. Rs. 420.00

Benefits :

• Improves haemoglobin levels
• Increases energy levels



SBRON™ SYRUP

TONIC WITH CALCIUM & IRON
आयरन एवं कैल्शियम की कमी और
विभिन्न प्रकार के एनीमिया में उपयोगी

Composition :

Each 10ml contains extracts from :

Bansa (Adhatoda vasica) 500 mg, Jeera (Cuminum cyminum) 300 mg, Saunf (Foeniculum vulgare) 300 mg, Sowa (Anethum sowa) 300 mg, Ashwagandha ext. (Withania somnifera) 200 mg, Khubkalan (Sisymbrium irio) 200 mg, Anantmoool (Hemidesmus indicus) 100 mg, Manjistha (Rubia cordifolia) 100 mg, Navsar 50 mg, Satva Nimbu 20 mg, Lohasav 2 ml, Lime Water 2 ml, Sugar q.s., Flavour Syrupy base q.s.

Indications :

Weakness, Anaemia due to iron, Calcium Deficiency and Lack of appetite.

DOSAGE

One to two teaspoonfuls twice a day, or as directed by the physician.

Pack : 200ml. M.R.P. Rs. 160.00



SBRON™ PLUS SYRUP

HELPS INCREASE HAEMOGLOBIN
& RED BLOOD CELLS

खून एवं कैल्शियम की कमी में
लाभदायक और विभिन्न प्रकार के
एनीमिया में उपयोगी

Composition :

Each 10ml contains :

Asthisamharaka	Cissus quadrangularis linn	400 mg
Ashwagandha	Withania somnifera	400 mg
Satavari	Asparagus racemosus	200 mg
Bhumiamla	Phyllanthus niruri	200 mg
Amla	Embellica officinale	200 mg
Harad	Terminalia chebula	200 mg
Gokhru	Trubulus terrestris	200 mg
Minerals (Bhasma, Pishti etc.)		
Paraval Bhasma	Coral calcium	100 mg
Kukktang Bhasma	Egg shell calcium	100 mg
Mandur Bhasma	Calcined iron	50 mg
Loh Bhasma	Calcined iron	50 mg
Swanmakshish		
Bhasma	Copper and Iron pyrite	25 mg
Kasis Bhasma	Green vitric	25 mg
Sugar		q.s.

Indications :

General debility, Anaemia & Weakness after illness, bones & muscles weakness.

Dosage : 10-20ml twice a day or as directed by the physician.

Pack : 300ml. M.R.P. Rs. 300.00



KIDS HEALTH



GRIPVON GRIPE WATER

GIVES INSTANT RELIEF TO INFANTS AND BABIES CRYING DUE TO GRIPE AND STOMACH PAIN CAUSED BY GAS, ACIDITY AND INDIGESTION.

ग्राइप वाटर

Composition :

Each 5 ml contains :	50 mg
Sodium bicarbonate	5 mg
Foeniculum vulgare	3 mg
Glycyrrhiza glabra	5 mg
Mentha piperita	3 mg
Anethum graveolens	q.s.
Syrup base	

Useful in : Indigestion, Abdominal Pain, Acidity, Loss of Appetite, Helps in flatulence disorder of the bowels, Vomiting and diarrhoea at the time of teething and other complaints, Keeps baby healthy and growing.

Dosage :

For new born infants : 2.5 ml (1/2 teaspoonful approx.)
1 to 6 months old : 5 ml 6 months to 1 year old : 10 ml
2 years and above : 10-15 ml (2-3 teaspoonful approx.) 3 times daily

Pack : 150ml. M.R.P. Rs. 160.00



EZYDAY-PD[®] TONIC FOR KIDS

LAXATIVE & DIGESTIVE TONIC FOR KIDS

बच्चों में कब्ज एवं अपच में लाभदायक

Each 5ml. contains aqua extracts of :

Mullethi 125 mg, Amaltas 125 mg, Munabka 125 mg, Katuki 125 mg, Amla 125 mg, Harad 125 mg, Bahera 125 mg, Patol 125 mg, Preservative : Sodium Benzoate 0.5%, MPS 0.2%, PPS 0.02%

Useful in : Laxative & Digestive Tonic for kids. Safe and Non-Habit Forming Bowel Regulator.

Dosage : 5-10ml twice daily or at bed time only (according to severity of problem) or as directed by physician.

Pack : 100ml. M.R.P. Rs. 95.00



MEDILIV[™] DROPS

LIVER PROTECTOR DROPS

बच्चों में लिवर रोग, हेपेटाइटिस, भूख न लगने में उपयोगी

Each 1ml. contains aqua extracts of :

Kutki 16 mg, Punarnava 16 mg, Bhrungraj 16 mg, Bhumiamalaki 16 mg, Yashtimadhuk 16 mg, Guduchi 16 mg, Daruharidra 8 mg, Kakmachi 8 mg, Sharpunkha 8 mg, Sunthi 8 mg, Marica 8 mg, Pippali 8 mg, Trifla 20 mg, Henna 8 mg, Indian Sorrel 8 mg, Nisoth 8 mg, Arjuna 16 mg

Useful in :

Loss of appetite, Jaundice, Viral Hepatitis.

Dosage :

Infants : 6 to 7 drops 3 to 4 times a day
Children : 10 to 15 drops 3 to 4 times a day

Pack : 30ml. M.R.P. Rs. 70.00



KIDSET[®] DROPS DIGESTIVE TONIC

TONIC FOR HEALTHY GROWTH

पाचन को बढ़ाता है, दस्त, कब्ज और पेट दर्द में राहत, दंतों के निकलने में सहायक

Composition :

Each 1 ml contains extracts of :

Aswagandha 30 mg, Anjeer ext. 30 mg, Sowa ext. 30 mg, Nagarmoth ext. 20 mg, Khubkalan ext. 20 mg, Mulethi ext. 20 mg, Varahikand ext. 20 mg, Vidarikand ext. 20 mg, Jeera ext. 10 mg, Katad ext. 10 mg, Vach ext. 10 mg, Elaichi ext. q.s. Flavoured Syrupy base
Colour : Ponceau 4R

Useful in :

Abdominal Pain, Colic and griping Pain, Growth Failure, Indigestion, Anorexia.

Dosage : 6-8 drops for neonatal (3 to 6 months), 10-15 drops for infants (6 months to 1 year), one ml for children (1 to 3 years), 2ml to be taken as required 3 to 4 times a day for children (3 to 5 years), one teaspoonfuls thrice a day above 5 years or as directed by the physician.

Pack : 30ml. M.R.P. Rs. 70.00



COLD RUB BABY COLD RELIEF ROLL-ON

WITH NATURAL ESSENTIAL OILS FOR
COLD • COUGH • CONGESTION

Composition :

Each 5ml contains oils of :

Peppermint	Mentha piperita	Cystals	1%
Thymol	Trachyspermum ammi	Cystals	1%
Camphor	Cinnamomum camphora	Cystals	1%
Eucalyptus Oil	Eucalyptus globulus	Lv	2%
Gingely Oil	Sesamum indicum	Sd	30%
Coconut Oil	Cocos nucifera	Frt	q.s.

Useful in :

Helpful in cold, cough, congestion.

How to use :

For babies (3+ months to 1 year) :

Apply roll-on to a fresh cloth or pillow and place it near them.

For Kids (1 year and above) :

Apply the roll-on to the chest, back of the feet, or around the nostrils.

Pack : 40ml. M.R.P. Rs. 250.00



SUPERACT[®] DROP VITAL

INCREASES APPETITE
INCREASES IMMUNITY
IMPROVES DIGESTION

बच्चों के लिए मल्टीविटामिन ड्रॉप्स

Each 1ml. contains aqua extracts of :

Ashwagandha 500 mg, Arjuna Chhal 400 mg, Bhringraj 400 mg, Mashparni 300 mg, Muggdparni 300 mg, Jivanti 200 mg, Gwarpatha 200 mg, Widarikand 200 mg, Kalmegh 200 mg, Vidang 300 mg

Indications :

Loss of appetite, Helps to recover body from illness, Increases overall health and boosts immunity.

Dosage :

Infants : 6 to 7 drops 3 to 4 times a day
Children : 10 to 15 drops 3 to 4 times a day

Pack : 30ml. M.R.P. Rs. 75.00



DIGESTION, ACID, IBS & PROSTATE CARE



DIGEACT SYRUP

A DIGESTIVE ENZYME SYRUP
गैस, एसिडिटी और पाचन में उपयोगी

Each 10 ml contains extracts of :

Nagarmoth 500 mg, Harde 400 mg, Ajowan 400 mg, Gulab phool 250 mg, Dalchini 200 mg, Saunf 200 mg, Kali Mirch 100 mg, Piper 100 mg, Jeera 100 mg, Piplamool 50 mg, Sajjiksar 25 mg, Kala Namak 25 mg, Nosadar 25 mg, Pudina satva 20 mg

Useful in :

Improves Digestion, Stimulates Appetite, Cures Constipation, Flatulence & Dyspepsia, Hyper-acidity & Heart burn, Gastro-Intestinal Spasm, Acid / Bile Reflux.

Dosage:

One to two teaspoonful after each meals.

Pack : 200ml. M.R.P. Rs. 160.00



PINGOCID ANTACID SYRUP

FOR FAST ACTING RELIEF FROM ACIDITY & GAS

गैस, अफारा और अजीर्ण में उपयोगी

Each 5ml contains extracts of :

Bharingraj 500mg, Pudina 300mg, Chavya 300mg, Chitrak mool 200mg, Triphala 200mg, Patol patra 200mg, Jethimadh 200mg, Jeera 50mg, Ajowan 50mg, Sowa 50mg, Viavidanga 50mg, Saunf 50mg, Marorphali 50mg

Useful in :

An antacid of choice to neutralize hyper acidity Acid regurgitation - heart burns Dyspepsia Hyper acidity Gastritis - excessive salivation Stomatitis and flatulence

DOSAGE

One to two teaspoonfuls twice a day with water after meal or as directed by the physician.

Pack : 200ml. M.R.P. Rs. 160.00



DIGEACT CAPSULE

DIGESTIVE ENZYME TABLET
गैस, एसिडिटी और पाचन में उपयोगी

Each 500 mg digestive capsule contains(extract) :

Dhania 100 mg, Sugandhala 100 mg, Belgiri 100 mg, Motha 100 mg, Sunthi 100 mg

Useful in :

- Improves Digestion
- Stimulates Appetite • Cures Constipation
- Flatulence & Dyspepsia
- Hyper-acidity & Heart burn
- Gastro-Intestinal • Spasm
- Acid / Bile Reflux

Dosage : 1 capsule after meal or as directed by the physician.

Pack : 30 Capsules M.R.P. Rs. 270.00



PINGOCID ANTACID SYRUP

FOR FAST ACTING RELIEF FROM ACIDITY & GAS

गैस, अफारा और अजीर्ण में उपयोगी

Each 5ml contains extracts of :

Bharingraj 500mg, Pudina 300mg, Chavya 300mg, Chitrak mool 200mg, Triphala 200mg, Patol patra 200mg, Jethimadh 200mg, Jeera 50mg, Ajowan 50mg, Sowa 50mg, Viavidanga 50mg, Saunf 50mg, Marorphali 50mg

Useful in :

An antacid of choice to neutralize hyper acidity Acid regurgitation - heart burns Dyspepsia Hyper acidity Gastritis - excessive salivation Stomatitis and flatulence

DOSAGE

One to two teaspoonfuls twice a day with water after meal or as directed by the physician.

Pack : 450ml. M.R.P. Rs. 320.00



IBS SET CAPSULE

CAPSULE FOR IRRITABLE BOWEL SYNDROME

इरिटेबल बाउल सिंड्रोम, आंतों के रोग, पेट दर्द, पेट फूलना, इरिटेबल बाउल सिंड्रोम की वजह से होने वाले कब्ज या दस्त में सहायक।

Composition :

Each 500mg capsule contains (extracts) :

Kutaj *Wrightia antidysenterica* 200 mg
Atees *Aconitum heterophyllum* 50 mg
Dhania *Coriandrum sativum* 50 mg
Khus *Chrysopogon zizanioides* 50 mg
Bilwa *Aegle marmelos* 50 mg
Mustak *Cyperus rotundus* 50 mg
Saunf *Foeniculum vulgare* 50 mg

Useful in :

Support health digestion promotes easy daily bowel movement.

Usage : 1 capsule twice daily with water or as advised.

Pack : 30 Capsule M.R.P. Rs. 375.00



PINGOCID CAPSULE

HERBAL ANTACID CAPSULE

गैस, अफारा और अजीर्ण में उपयोगी

Composition :

Each capsule contains :-

Bharingraj ext. 100mg, Triphala ext. 60mg, Pudina ext. 50mg, Chavya ext. 50mg, Patol patra 50mg, Jethimadh ext. 50mg, Jeera ext. 50mg, Ajowan ext. 50mg, Shankh Bhasma 40mg

Useful in :

Helps in acidity, indigestion, discomfort in stomach, anorexia.

DOSAGE

One capsule twice a day with water after meal or as directed by the physician.

Pack : 10 x 1 x 10 Capsules M.R.P. Rs. 1200.00



EZYDAY[®] PLUS POWDER

EFFECTIVE RELIEF FROM GASTRIC & CONSTIPATION PROBLEMS

अपच व कब्ज के लिए लाभदायक

Each 5 gm contains :

Senna (Cassia angustifolia) Lv	2.5 g
Harad (Terminalia chebula) Frt	0.75 g
Mullethi (Glycyrrhiza glabra) Rt	0.5 g
Gulab (Rosa centifolia) Flr	0.25 g
Saunf (Foeniculum vulgare) Frt	0.25 g
Mint (Mentha arvensis) Lv	0.25 g
Sajjikhhar (Sodium Bicarbonate)	0.25 g
Kala Namak (Sodium Chloride)	0.25 g

Useful in : • Constipation • Associated Gas • Indigestion • Acidity

Dosage :
Adults : 1-2 spoonful (5-10g)
Children : ½-1 spoonful (2.5-5g) with a glass of fresh or lukewarm water.

Pack : 100 gm. M.R.P. Rs. : 180/-



EZYDAY[®] LAXATIVE TABLETS

3IN1 BENEFITS
OVERNIGHT RELIEF •
NO ABDOMINAL CRAMPS •
EASY TO USE •

Composition :

Each tablet contains extracts of :

Sanay	Cassia angustifolia	Lf	250 mg
Kala Dana	Ipomoea hederacea	Sd	200 mg
Kala Namak	Soddi chloridum	Pdr	120 mg
Amaltas gudda	Cassia fistula	Frt	100 mg
Ajowan	Trachyspermum ammi	Frt	40 mg
Sunthi	Zingiber officinale	Rhz	20 mg

Useful in :
For relief from chronic constipation and associated symptoms like flatulence, nausea, gas and acidity. Eases bowel evacuation in painful conditions of piles and fissures.

Dosage : 1-2 tablets to be taken with water at bed time or as advised by the physician. Individual results may vary, dose may be adjusted accordingly.

Pack : 30 Tablets. M.R.P. Rs. : 240.00



PROSTOACT CAPSULE

HELPS IN PROSTATE PROBLEMS

प्रोस्टेट वृद्धि को कम करने और सामान्य पेशाब कार्यों को बहाल करने में सहायक

Each 500 mg capsule contains :

Varuna	50 mg
Gokshura (Gokhru)	50 mg
Khadira	50 mg
Pumpkin Seed	50 mg
Alsi (Flaxseed)	50 mg
Yasad Bhasma	25 mg
Varunadi Ghan Satva	225 mg

Useful in :

Helps to reduce swelling & burning sensation
Normalises urgency and frequency of urination
Supports prostate health and urinary functions

Dosage : Take one capsule twice daily or as advised.

Pack : 30 Capsules M.R.P. Rs. 360.00



APT-ACT SYRUP

APPETIZER & DIGESTIVE
भूख बढ़ाने व पाचन में उपयोगी

Composition :

Each 5 ml. contains :

Pudina	100 mg,	Sonth	100 mg,	Harad	50 mg,				
Amla	50 mg,	Ajwain	50 mg,	Chitrak	50 mg,				
Jeera	50 mg,	Nagar Motha	50 mg,	Vidang	50 mg,				
Pipli	50 mg,	Saunf	50 mg,	Navsar	25 mg,	Saindha	20 mg,		
Piplamool	10 mg,	Kappor	5 mg,	Loh Bhasam	2 mg,	Syrup Base	q.s.,	Preservatives	q.s.

Useful in :

For Stomach Troubles like Indigestion, Acidity, Constipation, Loss of Appetite, Dyspepsia, Chest burn & Short of Abdominal Pains.

Dosage : One to Two teaspoons twice a day or as directed by Physician.

Pack : 200ml. M.R.P. Rs. 160.00



PROSTOACT CAPSULE

HELPS IN PROSTATE PROBLEMS

प्रोस्टेट वृद्धि को कम करने और सामान्य पेशाब कार्यों को बहाल करने में सहायक

Composition :

Each capsule contains :

Chandraprabha	100 mg,	Carica papaya	100 mg,
Crataeva religiosa	75 mg,	Tribulus terrestris	75 mg,
Bauhinia variegata	50 mg,	Boerhavia diffusa	50 mg,
Shuddha Shilajit	50 mg,	Excipients	q.s.

Dosage :

One or two capsule daily or as directed by the physician.

Useful in :

Helps to reduce swelling & burning sensation
Normalises urgency and frequency of urination
Supports prostate health and urinary functions

Pack : 10 x 1 x 10 Capsules M.R.P. Rs. 1200.00



EZYDAY[®] POWDER

EFFECTIVE RELIEF FROM GASTRIC & CONSTIPATION PROBLEMS

अपच व कब्ज के लिए लाभदायक

Each 10 gm powder contains :

Senna	2.66 g,	Harad	1.33 g,	Sunthi	0.67 g
Saunf	1.33 g,	Trivrt	0.67 g,	Kaladana	1.33 g
Mint	0.67 g,	Sochal Salt	0.67 g,	Saindha namak	0.67 g

Useful in :

• Constipation • Associated Gas • Indigestion • Acidity

Dosage :

Adults : 1-2 spoonful (5-10g)
Children : ½-1 spoonful (2.5-5g) with a glass of fresh or lukewarm water.

Pack : 100 gm. M.R.P. Rs. : 150/-



DIGEACT TABLET

DIGESTIVE ENZYME TABLET

गैस, एसिडिटी और पाचन में उपयोगी

Composition :

Each tablet contains extracts of :

Harde ext.	50 mg,	Jeera ext.	50 mg,	Pipramool ext.	50 mg,	Revand chini ext.	50 mg,
Ajmod ext.	45 mg,	Kala namak	25 mg,	Dalchini ext.	20 mg,	Satva Pudina	20 mg,
Saunf ext.	10 mg,	Piper ext.	10 mg				

Useful in :

Indigestion, Anorexia, Gastritis, Hyper-acidity & Constipation.

Dosage : 1 capsule after meal or as directed by the physician.

Pack : 10 x 1 x 10 Tablets M.R.P. Rs. 900.00



PETSET CHURAN

EFFECTIVE RELIEF FROM BLOATING, INDIGESTION GAS & ACIDITY

Each 10gm. powder contains:

Senna (Cassia angustifolia) Lv	2.66g
Harad (Terminalia chebula) Frt	1.33g
Sunthi (Zingiber officinale) Rz	0.67g
Saunf (Foeniculum vulgare) Frt	1.33g
Trivrt (Operculina turpethum) Rt	0.67g
Kaladana (Ipomea hederacea) Sd	1.33g
Mint (Mentha arvensis) Lv	0.67g
Sochal Salt (Unaqua Sodium Chloride)Pdr	0.67g
Saindha namak (Sodii chloridum) Pdr	0.67g

Provides relief from :

• Bloating • Indigestion • Gas • Acidity

• आफरा • गैस • बदहज़मी • एसिडिटी

Dosage : 1 teaspoonful after meal with lukewarm water or as directed by the physician.

Pack : 100 g M.R.P. Rs. 290.00



DIARROSET SYRUP

ANTI-DIARRHEAL SYRUP
दस्त व अमीबियासिस में उपयोगी

Each 5ml. syrup contains :

Indrajav 125 mg, Kutaj 125 mg, Nagarmotha 50 mg,
Nagkesar 50 mg, Dadim 50 mg, Pudina 50 mg,
Vaividang 100 mg, Saunf 100 mg, Gomathi 50 mg,
Sonth 50 mg, Mulethi 30 mg

Indications :

Loose motion, Diarrhea & Stomach Pain

Dosage : 10 ml Twice a day with luke warm
water or as directed by physician.

Pack : 200ml. M.R.P. Rs. 160.00



TRIPHALA CHURNA

EFFECTIVE RELIEF FROM
GASTRIC & CONSTIPATION
PROBLEMS
त्रिफला चूर्ण

**(Terminalia chebula, Terminalia bellerica &
Phyllanthus emblica)**

- Triphala provides a gentle pro-kinetic effect on the bowels and helps relieve long-standing constipation.
- The active constituents derived from three fruits exert strong antioxidant effects and promote bowel wellness.
- Triphala relieves abdominal bloating and belching by soothing and calming the intestinal walls.

Dosage :

For Kids : (5 to 12 years) 2-3 gm twice a day with
water or honey after food.
For Adults : 5-10 g/1-2 teaspoonful twice a day with
water or honey after food.

Pack : 100g M.R.P. Rs. 190.00



DIGEACT SYRUP

(TASTY CHATPAT FLAVOUR)

AN AYURVEDIC
DIGESTIVE ENZYME
गैस, एसिडिटी और पाचन में उपयोगी

Each 200ml contains :

Kala Jeera 9 g, Swet Jeera 2 g, Makoy 2.5 g,
Kalimirch 4.5 g, Sonth 4.4 g, Hing 0.1 g,
Pipal 2 g, Sounf 2 g, Ajwain 2 g, Nimbu Satva 1 g,
Sandha Lawan 4.5 g, Khand 66 g

Useful in : Improves Digestion Stimulates Appetite,
Cures Constipation, Flatulence & Dyspepsia,
Hyper-acidity & Heart burn, Gastro-Intestinal Spasm,
Acid / Bile Reflux.

Dosage: One to two teaspoonful after each meals.

Pack : 200ml. M.R.P. Rs. 160.00



DIABETES CARE



DIABACT SYRUP

FORMULA FOR DIABETES MELLITUS, GENERAL WEAKNESS DUE TO DIABETES

उच्च मधुमेह में लाभकारी, रोग प्रतिरोधक क्षमता को बढ़ाने में सहायक

Each 10 ml contains :

Gudmar Buti 800 mg, Mal Kangli 200 mg, Chirayta 100 mg, Shilajit 50 mg, Tejpatra 400 mg, Ashwagandha 200 mg, Vijaysar 500 mg, Methi 500 mg, Karela 500 mg, Jamun 500 mg

Useful in :

Diabetes Mellitus, General Weakness

Dosage:

Take 10ml in half glass of water before 10 minutes before meal or as directed by the physician.

Pack : 200ml. M.R.P. Rs. 180.00



DIABACT CAPSULE

FOR THE MANAGEMENT OF MATURITY ONSET DIABETES MELLITUS

उच्च मधुमेह में लाभकारी, रोग प्रतिरोधक क्षमता को बढ़ाता है शरीर से विषाक्त पदार्थों को बाहर निकालता है

Composition :

Each capsule contains :

Gudmar buti ext. 100 mg Haldi ext. 30 mg
Bael patra ext. 80 mg Karela ext. 70 mg
Methi Dana ext. 80 mg Shilajit shuddha 30 mg
Mamejava ext. 40 mg Trivang bhasma 30 mg
Vijaysar ext. 40 mg

Benefits :

- Free from the risk of hypoglycemia
- Controls diabetes mellitus.
- Hepato protective and anti-oxidant
- Encouraging glycogenesis/lipogenesis
- Taken regularly tends check the increasing requirement of other hypoglycemic

DOSAGE : One Capsule twice a day or as directed by the physician.

Pack : 60 Capsules M.R.P. Rs. 575.00



DIABACT SYRUP

FORMULA FOR DIABETES MELLITUS, GENERAL WEAKNESS DUE TO DIABETES

उच्च मधुमेह में लाभकारी, रोग प्रतिरोधक क्षमता को बढ़ाने में सहायक

Each 10 ml contains :

Gudmar Buti 800 mg, Mal Kangli 200 mg, Chirayta 100 mg, Shilajit 50 mg, Tejpatra 400 mg, Ashwagandha 200 mg, Vijaysar 500 mg, Methi 500 mg, Karela 500 mg, Jamun 500 mg

Useful in :

Diabetes Mellitus, General Weakness

Dosage:

Take 10ml in half glass of water before 10 minutes before meal or as directed by the physician.

Pack : 450ml. M.R.P. Rs. 360.00



DIABACT Diabetes Control Patches

GOODNESS OF 37 POTENT HERBS

Each 10ml contains :

S.No	Drug (Sanskrit)	Part Used	Extract Eqv.	Oily
1	Fennel	Foeniculum vulgare	Seed	50 mg
2	Onoclethara	Centurus asiatica	Heartwood	50 mg
3	Nagarjrotha	Cyperus rotundus	Rhizome	50 mg
4	Haldra	Isatis indigotica	Rhizome	50 mg
5	Haruhandra	Isatis indigotica	Stem Bark	50 mg
6	Murva	Marsdenia toziasisima	Root	50 mg
7	Kalmi	Salsola vermiculata	Root	40 mg
8	Ashwagandha	Withania somnifera	Root	40 mg
9	Shivella Chandan	Santalum album	Heartwood	40 mg
10	Rakta Chandan	Pterocarpus santalinus	Heartwood	40 mg
11	Kutki	Clerodendron serratum	Seed	30 mg
12	Yashimadhu	Plicorhiza kurroa	Root	30 mg
13	Hasna	Glycyrrhiza glabra	Root	40 mg
14	Pluchina	Pluchina lanceolata	Root	40 mg
15	Dalsani	Cinnamomum verum	Bark	30 mg
16	Bharangi	Clerodendrum serratum	Root	30 mg
17	Chayya	Piper retrofractum	Fruit	25 mg
18	Inderjav	Hotaria thera antidysenterica	Seed	25 mg
19	Aquilaria agallocha	Piper retrofractum	Heartwood	25 mg
20	Tejpatra	Cinnamomum tamala	Leaf	25 mg
21	Haritaki	Terminalia chebula	Fruit	30 mg
22	Bibhitaki	Terminalia bellirica	Fruit	30 mg
23	Haritaki	Phyllanthus obovata	Fruit	30 mg
24	Naluka / Sugandhbal	Pavonia odorata	Root	30 mg
25	Gandhbal	Valeriana wallichii	Root	30 mg
26	Bala	Sida cordifolia	Root	30 mg
27	Ambala	Abutilon indicum	Root	30 mg
28	Manjishta	Rubia cordifolia	Root	30 mg
29	Agni	Pinus roxburghii	Heartwood	25 mg
30	Patha	Cissampelos pareira	Root	30 mg
31	Lasuna	Symplocos racemosa	Bark	30 mg
32	Vacha	Acorus calamus	Rhizome	25 mg
33	Jatara	Curcuma cymosa	Root	25 mg
34	Jaiphal	Myristica fragrans	Seed	20 mg
35	Khus	Valeriana zizanioides	Root	30 mg
36	Vasa	Adhatoda vasica	Leaf	30 mg
37	Shivavari	Asparagus racemosus	Root	60 mg

Benefits :

- Maintains healthy glucose levels • Improves insulin sensitivity
- Supports the pancreas • Helps to maintain overall health
- Enhances Metabolism • Reduces Sugar Craving

Pack : 30ML + 30 (ADHESIVE TAPES) M.R.P. Rs. 750.00

Directions for use : Morning use (Oral)
Take 5 drops in half a glass of water early morning on an empty stomach.
Night Use (Foot Application)
• Before going to bed, put 5-10 drops on the provided non-medicated.
• Fix the pad under the sole of the foot. • Keep it applied throughout the night. • Remove the pad in the morning.
Regular use is recommended for best results.



DIABACT CAPSULE

FOR THE MANAGEMENT OF MATURITY ONSET DIABETES MELLITUS

उच्च मधुमेह में लाभकारी, रोग प्रतिरोधक क्षमता को बढ़ाता है शरीर से विषाक्त पदार्थों को बाहर निकालता है

Composition :

Each capsule contains :

Gudmar buti ext. 100 mg, Bael patra ext. 80 mg, Methi Dana ext. 80 mg, Mamejava ext. 40 mg, Vijaysar ext. 40 mg, Haldi ext. 30 mg, Karela ext. 70 mg, Shilajit shuddha 30 mg, Trivang bhasma 30 mg

Benefits :

- Free from the risk of hypoglycemia • Controls diabetes mellitus.
- Hepato protective and anti-oxidant
- Encouraging glycogenesis/lipogenesis
- Taken regularly tends check the increasing requirement of other hypoglycemic

DOSAGE : One Capsule twice a day or as directed by the physician.

Pack : 10 x 1 x 10 Capsules M.R.P. Rs. 1000.00



DIABACT DIABETES POWDER

FOR THE MANAGEMENT OF MATURITY ONSET DIABETES MELLITUS

उच्च मधुमेह में लाभकारी, रोग प्रतिरोधक क्षमता को बढ़ाता है शरीर से विषाक्त पदार्थों को बाहर निकालता है

Each 100 gm contains :

Amla 12.5 g, Gurmar 12.5 g, Bel 12.5 g
Neem 12.5 g, Karela 12.5 g, Jamun 12.5 g
Methi 12.5 g, Giloy 12.5 g

Usage :

- Maintains healthy glucose level
- Supports the pancreas
- 100% natural product
- Helps to maintain overall health

Direction for use : Take 2.5-5gm of powder with water before every meal.

Pack : 100 gm. M.R.P. Rs. 160.00



RESPIRATORY HEALTH



PINGKOFF-SF™ COUGH SYRUP

Each teaspoon (4ml) contains aqua extracts of :
Saunf 50 mg, Mullethi 50 mg, Gular 50 mg, Vasaka 50 mg,
Kantkari 50 mg, Maricha 25 mg, Pippali 50 mg, Sunthi
50 mg, Giloy 50 mg, Tulsi 50 mg, Katphala 50 mg,
Raktchandan 50 mg, Arjuna 50 mg, Lasura 50 mg,
Karkatshringi 50 mg, Devadaru 50 mg

Useful in :
Pingkoff-SF is a unique combination of scientifically
proven herbs that increase body's immunity against
cough & cold. Cough associated with Acute & Chronic
Upper and Lower Respiratory Tract Infections, Allergic
& Seasonal Cough, Smokers Cough, Cough due to
Chronic Obstructive Pulmonary Disease (COPD)

Dosage : Children : 1 teaspoonful 2-3 times a day.
Adults : 2 teaspoonful 2-3 times a day.

Pack : 100ml. M.R.P. Rs. 90.00

FORMULA FOR COUGH, COLD & CONGESTION

श्वसन तंत्र, गले में खराश व
खांसी में उपयोगी



PINGKOFF™ COUGH SYRUP

FORMULA FOR COUGH, COLD & CONGESTION

श्वसन तंत्र, गले में खराश व
खांसी में उपयोगी

Each 10ml contains extract derived from :
Bharangi 300 mg, Somlata 250 mg, Lasura 300 mg, Kantkar
300 mg, Tulsi 200 mg, Injeer 200 mg, Kakarshringi 200 mg,
Bahera 200 mg, Zuffa 50 mg, Khatmi 50 mg, Anardana 20 mg,
Banaphsa 50 mg, Kaiphala 25 mg, Naushadar 25 mg, Ciccidi 25 mg,
Karpoor 5 mg, Pudina 5 mg, Flavoured syrup base q.s.
Preservatives: Sodium Methyl Paraben and Sodium Propyl Paraben

Useful in :
Cough associated with Acute & Chronic,
Upper and Lower Respiratory Tract
Infections, Allergic & Seasonal Cough,
Smokers Cough, Cough due to Chronic
Obstructive Pulmonary Disease (COPD)

DOSAGE:
CHILDREN 1 teaspoonful
2-3 times a day
ADULTS 2 teaspoonful
2-3 times a day
or as directed by the Physician.

Pack : 100ml. M.R.P. Rs. 90.00



Pack : 200ml. M.R.P. Rs. 160.00

PINGKOFF CAPSULE

RELIEVES CHEST CONGESTION FAST RELIEF IN COUGH & COLD (NON DROWSY)

Composition :

Each capsule contains :

Kulanjan	375 mg
Ashwagandha	125 mg
Giloy	125 mg

Useful in :
Cough associated with Acute & Chronic,
Upper and Lower Respiratory Tract
Infections, Allergic & Seasonal Cough,
Smokers Cough, Cough due to Chronic
Obstructive Pulmonary Disease (COPD)

Dosage :
1-2 capsules with water at bed time or
as directed by the physician.

**Pack : 10 x 10 Capsules
M.R.P. Rs. 900.00**



ASTHMA SYRUP

ADVANCED FORMULA FOR RESPIRATORY SUPPORT

दमा तथा एलर्जी में लाभकारी

Each 10ml contains :

Somlata (Ephedra vulgaris)	150 mg
Vasaka (Adhatoda vasica)	200 mg
Tulsi (Ocimum sanctum)	150 mg
Yashtimadhu (Glycyrrhiza glabra)	150 mg
Haridra (Curcuma longa)	100 mg
Kantakari (Solanum xanthocarpum)	120 mg
Bharangi (Clerodendrum serratum)	120 mg
Shunthi (Zingiber officinale)	100 mg
Pippali (Piper longum)	80 mg
Trikatu (Pippali + Maricha + Shunthi)	80 mg
Talispatra (Abies webbiana)	80 mg
Banafsha (Viola odorata)	80 mg

Useful in :
• Asthma • Bronchitis • Sinusitis • Cough • Allergies
• Chronic respiratory issues • Running nose • Wheezing cold

Dosage : 10-15ml twice a day or as advised by the physician.

Pack : 200 ml M.R.P. Rs. 170.00



ASTHMA ACT CAPSULE

दमा तथा एलर्जी में लाभकारी

Each capsule contains (extract) :
Gojihva 33.33 mg, Yashtimadhu 33.33 mg, Misreya 33.33 mg,
Draksha 33.33 mg, Phalgu 33.33 mg, Unnava 33.33 mg,
Adusa 33.33 mg, Jupha 33.33 mg, Sapistana 33.33 mg,
Khubakalan 33.33 mg, Hamsapadi 33.33 mg,
Gulavanaphsa 33.33 mg, Atasi 33.33 mg,
Khatami 33.33 mg, Kantakari 33.33 mg,
Marica 33.33 mg

Useful in :
For use in bronchial asthma & cough,
Breathing Problems, In patients where use
of a pressurised inhaler or dry powder

Dosage : Take 1 Capsule in morning and
1 capsule in evening with water or
as directed by the Physician.

Pack : 10 x 10 capsule M.R.P. Rs. 1225.00



ASTHMA ACT CAPSULE

दमा तथा एलर्जी में लाभकारी

Each capsule contains (extract) :
Gojihva 33.33 mg, Yashtimadhu 33.33 mg, Misreya 33.33 mg,
Draksha 33.33 mg, Phalgu 33.33 mg, Unnava 33.33 mg,
Adusa 33.33 mg, Jupha 33.33 mg, Sapistana 33.33 mg,
Khubakalan 33.33 mg, Hamsapadi 33.33 mg,
Gulavanaphsa 33.33 mg, Atasi 33.33 mg,
Khatami 33.33 mg, Kantakari 33.33 mg,
Marica 33.33 mg

Useful in :
For use in bronchial asthma & cough,
Breathing Problems, In patients where use
of a pressurised inhaler or dry powder

Dosage : Take 1 Capsule in morning and
1 capsule in evening with water or
as directed by the Physician.

Pack : 30 capsule M.R.P. Rs. 370.00



HEART CARE & BP CARE



CHOLESTO FREE™ CAPSULE

FOR CHOLESTEROL MANAGEMENT
कोलेस्ट्रॉल के स्तर को सही करने में सहायक

Composition :

Each capsule contains :

Cinnamon ext. 100 mg, Alfalfa ext. 100 mg, Rason ext. 60 mg, Fenugreek ext. 60 mg, Arjun ext. 50 mg, Guggal ext. 50 mg, Yastimadhu ext. 50 mg, Shilajit ext. 30 mg, Excipients q.s.

Indications :

- Helps remove deposited cholesterol from blood vessels.
- Acts as a unique remedy for heart muscles.
- Reduces the risk of cerebral and cardiac stroke.
- Prevents the risk of blood pressure.
- It helps in keeping heart, kidney and brain healthy.

Dosage : 1 capsule twice a day with water or as directed by the physician.

Pack : 10 x 1 x 10 Capsules
M.R.P. Rs. 1200.00



TRIGLOVIN TABLET

ट्राइग्लिसराइड्स के स्तर को कम करने में सहायक

Each tablet contains :

Ajowan (Trachyspermum ammi) Frt 300mg, Pyaz (Allium cepa) Blb 75mg, Nut grass (Cyperus rotundus) Rt 75mg, Kuth (Saussurea lappa) Rt 75mg, Parwal (Trichosanthus dioica) Frt 75mg, Gandhak amlasar (Sulphur) Pdr 50mg, Garlic Juice (Allium sativum) Blb 33.33mg, Sunthi (Zingiber officinale) Rz 33.33mg, Turmeric (Curcuma longa) Rz 33.33mg

Useful in : High Triglycerides Levels

Dosage : One tablet twice daily or as directed by the physician.

Pack : 10 x 10 Tablets
M.R.P. Rs. 1200.00



HBPSET TABLET

TO CONTROL HIGH BP
उच्च रक्तचाप (High BP) में उपयोगी

Each 500 mg tablet contains (extracts) :

Choti Chandan	Rauvolfia serpentina	Rt	150 mg
Ashwagandha	Withania somnifera	Rt	75 mg
Shankpushpi	Convolvulus prostratus	WP	75 mg
Jatamansi	Nardostachys jatamansi	Rt	75 mg
Safed Chandan	Santalum album	Stm	75 mg
Jaharmohra Pishti	Classical drug	Pdr	50 mg

Useful in :

Controls High BP, Manages Stress & Controls Cholesterol Levels & Supports Healthy Heart Functions.

DOSAGE :

One to two tablets thrice a day with water after meal or as directed by the physician.

Pack : 10 x 1 x 10 Tablet
M.R.P. Rs. 1000.00



LOBP™ TABLET

FOR LOW BLOOD PRESSURE
निम्न रक्त चाप को सुचारु करने में सहायक

Composition :

Each coated tablet contains :

Hartal shuddha 50mg, Nirvishi 40mg, Excipients q.s.

Useful in :

Low Blood Pressure, Pneumonia, Bronchopneumonia, Heart depression, Cholera & Facial Paralysis

DOSAGE

One to two tablets thrice a day with water after meal or as directed by the physician.

Pack : 10 x 1 x 10 Tablets
M.R.P. Rs. 1000.00



HEARTCARE SYRUP

HEART PROTECTIVE TONIC
दिल एवं आर्टीस को मजबूत करता है

Each 10ml. contains aqua extracts of:
Tulsi 500 mg, Arjuna 1 g, Pushkarmool 1 g, Gotu kola 500 mg, Parwal 500 mg, Indian Gooseberry 500 mg, Dalchini 250 mg, Ginger 250 mg, Garlic 250 mg, Giloy 250 mg

Indications :

- Boosts your circulatory system naturally
- Strengthens Heart and Arteries

Dosage : 10-15 ml in half a glass of water empty stomach in the morning or as directed by the physician.

Pack : 300ml. M.R.P. Rs. 390.00



HEARTCARE CAPSULE

HEART PROTECTIVE TONIC
दिल एवं आर्टीस को मजबूत करता है

Each capsule contains :

Arjuna (Terminalia arjuna)	100 mg
Pushkarmool (Inula racemosa)	100 mg
Tulsi (Ocimum sanctum)	50 mg
Gotu kola (Centella asiatica)	50 mg
Parwal (Trichosanthes dioica)	50 mg
Amla (Phyllanthus emblica)	50 mg
Dalchini (Cinnamomum zeylanicum)	25 mg
Ginger (Zingiber officinale)	25 mg
Garlic (Allium sativum)	25 mg

Heartcare Capsules are made from a mixture of herbs like Tulsi, Arjuna, Dalchini, Garlic, Ginger & other essential ayurvedic ingredients which helps in reducing bad cholesterol (LDL), Controls stress, reduces the risk of heart attack, removes arterial blockage, improves the blood circulation in the body.

Dosage : One capsule two times a day or as directed by the physician.

Pack : 30 Capsules M.R.P. Rs. 375.00



PILES CARE



PILESACT[®] CAPSULE

FOR BLEEDING &
NON BLEEDING PILES
खूनी एवं बादी बवासीर में उपयोगी

Composition :

Daruhaldi (Berberis aristata) 80 mg,
Nagkesar (Mesua ferrea) 20 mg, Bekayan (Melia azadirachta) 40 mg,
Suran (Amorphophallus campanulatus) 60 mg, Sunthi
(Zingiber officinale) 40 mg, Kali Mirchi (Piper nigrum) 40 mg,
Pippali (Piper longum) 40 mg, Harar (Terminalia chebula) 40 mg,
Chitrak (Plumbago zeylanica) 40 mg, Amaltas (Cassia flatula) 40 mg,
Amla (Emblica officinalis) 20 mg, Bahera (Terminalia belerica) 20 mg,
Vach (Acorus calamus) 20mg.

Dosage :

Bleeding Piles : In acute bleeding, take 2 capsules three times a day with lassi or water. In normal condition take 2 capsules two times a day or as directed by the Physician.
Non Bleeding Piles : 2 capsules two times a day with water or as advised by the Physician.

Pack : 10 x 1 x 10 Capsules
M.R.P. Rs. 1300.00



PILESACT[®] CAPSULE

FOR BLEEDING &
NON BLEEDING PILES
खूनी एवं बादी बवासीर में उपयोगी

Composition :

Harad	Terminalia chebula	27.78 mg
Baheda	Terminalia bellirica	27.78 mg
Amla	Emblica officinalis	27.78 mg
Krsa (Pippali)	Piper longum	27.78 mg
Guggulu Shudhh	Commiphora wightii	138.88 mg
Arhs Kuthar Rasa	Classical formulation	250.00 mg

Dosage :

Bleeding Piles : In acute bleeding, take 2 capsules three times a day with lassi or water. In normal condition take 2 capsules two times a day or as directed by the Physician.
Non Bleeding Piles : 2 capsules two times a day with water or as advised by the Physician.

Pack : 30 Capsules M.R.P. Rs. 330.00



PILESACT[®] SYRUP

FOR BLEEDING &
NON BLEEDING PILES
खूनी एवं बादी बवासीर में उपयोगी

Composition :

Each 10ml contains :

Chirabilwa (Putikaranji) 100 mg, Punarnava
(Boehavia diffusa) 100 mg, Chitraka (Plumbago zeylanica) 150 mg,
Abhaya (Terminalia chebula) 10 mg, Kana (Canna indica) 50 mg,
Dusparsha (Solanum xanthocarpum) 150 mg, Bilva
(Aegle marmelos) 100 mg, Yavani (Trachyspermum ammi)
100 mg, Nagara (Zingiber officinale) 150 mg,
Patha (Cyclea peltata) 150 mg, Shuddha Rasvanti
(Berberis aristata) 200 mg, Neem Beej (Azadirachta indica)
200 mg, Saindhava AB

Dosage : One to two teaspoonful after each meal.

Pack : 200ml. M.R.P. Rs. 170.00



PILESACT[®] CREAM

FOR BLEEDING &
NON BLEEDING PILES
बवासीर में उपयोगी

Each gm. contains :

Dugdhdika 5%, Lajjalu 5%, Rasunt 3%
Majuphal 2%, Neem 5%, Spearmint 0.33%
Emolient Base q.s.

Usage and Benefits :

Relieves Pain, Itching,
Soothes and Lubricates.
No unpleasant odours.
Has a dual action formula.

Direction to use : Apply gently on the affected area as per advice of the physician or two times a day.

Pack : 30 gm
M.R.P. Rs. 140.00



LIVER CARE



MEDILIV-DSTM LIVER TONIC

Each 10 ml contains :

Bhumyamalaki 750 mg, Bhringraj 750 mg, Kasni 600 mg, Punarnava 450 mg, Kalmegh 300 mg, Guduchi 300 mg, Rakta Rohida 300 mg, Revandchini 200 mg, Pitpapara 200 mg, Daruhaldi 200 mg, Haritaki 150 mg, Vidang 150 mg, Chitrak 150 mg, Sharpunkha 120 mg, Tulsi 100 mg, Neem Chhal 100 mg, Katuka 100 mg, Kachur 100 mg, Nishoth 100 mg, Makoi 80 mg, Gokhru 70 mg, Kumari 50 mg, Amalaki 50 mg, Yashtimadhu 50 mg, Arni 50 mg, Arjuna 20 mg, Biranjasipha 20 mg, Jhau 20 mg, Saunf 20 mg, Kasondi 20 mg

Usage and Benefits :

- Increases Bile Flow
- Reduces Bilirubin Level
- Reverses Hepatic Cell Damage
- Improves Cell Function & Immunity

Pack : 200ml.

M.R.P. Rs. 180.00 (BOTH)

FORMULA FOR ENLARGED LIVER, LIVER DISORDER

पीलिया, लीवर के विकारों में उपयोगी, लीवर में जैव रासायनिक स्थिति को सामान्य करने के लिए उत्तम औषधी

Dosage :

Children : 1 teaspoonful 2-3 times a day
Adults : 2 teaspoonful 2-3 times a day or as directed by the Physician.



MEDILIVTM CAPSULE

HEPATO PROTECTIVE & HEPATO STIMULANT CAPSULE

लिवर विकार, अपच, पीलिया और रून की कमी में उपयोगी

Each capsule contains :

Kalmegh 100mg, Bhringraja 80mg, Katuki 50mg, Tamalaki 100mg, Sharpunkha 70mg, Guduchi 100mg

Usage and Benefit :

Mediliv is very useful in Jaundice, Hepatitis-B, Anemia, Poor digestion, Constipation, Underweight, Ski conditions/allergies, Dark circles under eyes/puffiness, Recurring headaches, Food allergies, Fluctuating blood sugar, PMS, Poor Sleep.

Usage :

1 capsule twice daily with water or as advised.

Pack : 30 capsule M.R.P. Rs. 270.00



MEDILIV[®] TABLET

HEPATO PROTECTIVE & HEPATO STIMULANT TABLET

लिवर विकार, अपच, पीलिया और रून की कमी में उपयोगी

Each tablet contains :

Bhui amla ext. 50 mg, Punarnava ext. 50 mg, Bhringraj ext. 40 mg, Giloy ext. 40 mg, Kalmegh 30 mg, Rohitak 30 mg, Pitpara 30 mg, Daruhaldi 20 mg, Revand chini 20 mg, Kasni 20 mg, Haritaki 20 mg

Usage and Benefit :

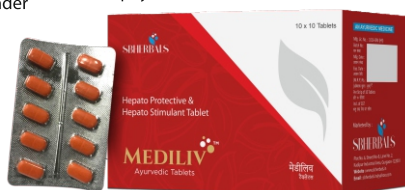
Mediliv is very useful in Jaundice, Hepatitis-B, Anemia, Poor digestion, Constipation, Underweight, Skin conditions/allergies, Dark circles under eyes/puffiness, Recurring headaches, Food allergies, Fluctuating blood sugar, PMS, Poor Sleep.

DOSAGE

Tablet: One to two tablets thrice a day with water after meal or as directed by the physician.

Pack : 10 x 10 Tablets

M.R.P. Rs. 900.00



MEDILIV-DSTM LIVER TONIC

FORMULA FOR ENLARGED LIVER, LIVER DISORDER

पीलिया, लीवर के विकारों में उपयोगी, लीवर में जैव रासायनिक स्थिति को सामान्य करने के लिए उत्तम औषधी

Each 10 ml contains :

Bhumyamalaki 750 mg, Bhringraj 750 mg, Kasni 600 mg, Punarnava 450 mg, Kalmegh 300 mg, Guduchi 300 mg, Rakta Rohida 300 mg, Revandchini 200 mg, Pitpapara 200 mg, Daruhaldi 200 mg, Haritaki 150 mg, Vidang 150 mg, Chitrak 150 mg, Sharpunkha 120 mg, Tulsi 100 mg, Neem Chhal 100 mg, Katuka 100 mg, Kachur 100 mg, Nishoth 100 mg, Makoi 80 mg, Gokhru 70 mg, Kumari 50 mg, Amalaki 50 mg, Yashtimadhu 50 mg, Arni 50 mg, Arjuna 20 mg, Biranjasipha 20 mg, Jhau 20 mg, Saunf 20 mg, Kasondi 20 mg

Usage and Benefits :

- Increases Bile Flow
- Reduces Bilirubin Level
- Reverses Hepatic Cell Damage
- Improves Cell Function & Immunity

Dosage :

Children : 1 teaspoonful 2-3 times a day
Adults : 2 teaspoonful 2-3 times a day or as directed by the Physician.

Pack : 450ml. M.R.P. Rs. 360.00



MEDILIVTM LIVER TONIC

FORMULA FOR ENLARGED LIVER, LIVER DISORDER

लीवर विकार, अपच, पीलिया और रून की कमी में उपयोगी

Each 10ml contains :

Kalmegh 100 mg, Kutki 70 mg, Harar 150 mg, Bahera 200 mg, Amla 270 mg, Punarnava 150 mg, Makoy 200 mg, Saunf 150 mg, Bhringraj 200 mg, Sarfooka 200 mg, Bhumi Amla 300 mg, Sugar q.s. Preservatives (S.B., M.P.S. & P.P.S.)

Useful in :

Enlarged Liver, Liver Disorder, Loss of Appetite.

Dosage :

Children : 1 teaspoonful 2-3 times a day
Adults : 2 teaspoonful 2-3 times a day or as directed by the Physician.

Pack : 200ml. M.R.P. Rs. 160.00



MEDILIVTM LIVER ENZYME SYRUP

FOR HEALTHY LIVER & ENZYME FUNCTION

लिवर विकार, अपच, पीलिया और रून की कमी में उपयोगी

Each 15ml contains extract derived from :

Amalaki (Embelica officinalis)	50 mg	Kasni (Cichorium intybus)	25 mg
Hantsra (Terminalia chebula)	50 mg	Himsra (Capparis spinosa)	25 mg
Bahera (Terminalia bellerica)	50 mg	Ghosalata (Lufa bindal)	25 mg
Kalmegh (Andropogon paniculata)	25 mg	Punarnava (Baethaavia diffusa)	25 mg
Bhringraj (Eclipta alba)	50 mg	Danuharidra (Berberis aristata)	25 mg
Pudinah (Mentha vindis)	25 mg	Nimba (Azadirachta indica)	25 mg
Sonapata (Cassia angustifolia)	150 mg	Chitraka (Plumbago zeylanica)	25 mg
Carica (Papaya)	50 mg	Biranjasif (Achillea millefolium)	10 mg
Anantamul (Hemidesmus indicus)	25 mg	Brahmi (Bacopa monnari)	10 mg
Ashwagandha (Withania somnifera)	25 mg	Olive leaf (Jalpa)	25 mg
Arjuna (Terminalia arjuna)	50 mg	Sunthi (Zingiber officinale)	10 mg
Kurchi (Halarhena antidyenterica)	25 mg	Jhavuka (Tamarix gallica)	10 mg
Bhui Amala (Phyllanthus niruri)	50 mg	Mulaka (Raphanus sativus)	10 mg
Pittapada (Fulmaria parviflora)	50 mg	Hing (Ferula foetida)	10 mg
Gulancha (Tinospora cordifolia)	50 mg	Ajowan Arak (Thymol)	2.5 mg
Ashshoura (Glycosmis pentaphylla)	50 mg	Ghritakumari (Aloe indica)	2.5 mg
Jau (Hardium sativum)	25 mg	Sarkara (Sugar)	2.0 mg
Yashtimadhu (Glycyrriza glabra)	25 mg	Sodium Benzoate	0.75 g
Kakamachi (Sokanum nigrum)	15 mg	Sodium Methyl Paraben	30 mg
Rohitaka (Tecomella undulata)	25 mg	Sodium Propyl Paraben	0.0025 g
Kulethara (Hydrophilis spinosa)	25 mg	Bronopol 1 mg + Caramel	0.001 g
			40 mg

Dosage : Children : 1/2 teaspoonful twice a day

Adults : 2-3 teaspoonful twice a day or as directed by the physician.

Pack : 200ml. M.R.P. Rs. 170.00



NERVOUS SYSTEM & VARICOSE VEINS



NERVO ACT NERVINE TONIC

HERBAL NERVINE TONIC

मिर्गी, साइग्रेन, वेरीकोस वेन्स (टांगों में नीली नसों का जाल), मांसपेशियों की कमजोरी, हाथों व टांगों में सुन्नपन में लाभकारी

Composition :

Each 10 ml syrup contains :

Brahmi Ext. 200 mg, Ashwagandha Ext. 200 mg, Gotu Kola Ext. 150 mg, Tagar Ext. 100 mg, Shilajit Ext. 100 mg, Amla Ext. 100 mg, Chamomile Ext. 100 mg, Jatamansi Ext. 50 mg, Vach Ext. 50 mg, Sugar q.s.

Useful in :

Epilepsy, Migraine, Varicose Vein, Neuritis, Deep vein thrombosis (DVT), Numbness in the legs and arms & Muscle weakness.

Dosage : Children : ½ teaspoonful twice a day.

Adults : 2 teaspoonful twice a day or as directed by the Physician.

Pack : 200ml. M.R.P. Rs. 180.00



NERVOACT TABLET

HERBAL NERVINE TABLET

मिर्गी, साइग्रेन, वेरीकोस वेन्स (टांगों में नीली नसों का जाल), मांसपेशियों की कमजोरी, हाथों व टांगों में सुन्नपन में लाभकारी

Each film coated tablet contains extracts of :

Ashwagandha 50 mg, Dashmool 50 mg, Chitrakmool 20 mg, Nirgundi 50 mg, Rasna 40 mg, Lahsun 10 mg, Karanj beej 50 mg, Sudh kuchala 10 mg, Loh bhasma 10 mg, Shunti 15 mg, Maricha 15 mg, Pippali 15 mg, Ras Sindhur 5 mg, Ajwain 20 mg, Erandamool 40 mg, Balamool 20 mg, Shankupushpi 40 mg, Manjishtha 20 mg, Sahachara 20 mg, Excipients q.s.

Useful in : Epilepsy, Migraine, Varicose Vein, Neuritis, Deep vein thrombosis (DVT), Numbness in the legs and arms & Muscle weakness.

Dosage : 1 to 2 tablets twice a day or as directed by the physician.

**Pack : 10 x 1 x 10 Tablets
M.R.P. Rs. 1300.00**



VARICOSET CAPSULE

RELIEVES SWELLING & PAIN IMPROVES BLOOD CIRCULATION TREATS VARICOSE & SPIDER VEINS

वेरीकोस वेन्स (नसों की सूजन) में उपयोगी

Composition :

Each 500mg capsule contains :

Gotu Kola	Cebtella asiatica	62.5 mg
Chirabilva	Holoptelea integrifolia	62.5 mg
Manjishtha	Rubia cordifolia	62.5 mg
Guduchi	Tinospora cordifolia	62.5 mg
Ashwagandha	Withania somnifera	62.5 mg
Turmeric	Curcuma longa	62.5 mg
Himalayan	Aesculus indica	62.5 mg
Chestnut		
Garlic	Allium sativum	31.25 mg
Onion	Allium cepa	31.25 mg

Useful in :

Varicose & Spider Veins, Swelling, Pain & Improves Blood Circulation.

Dosage : 1-2 capsules twice daily with luke warm water or as directed by the physician.

Pack : 30 capsule M.R.P. Rs. 420.00



VARICOSET CREAM

HERBAL CREAM FOR BETTER CIRCULATION IN HANDS & LEGS

Each 15ml. made with :

Tailam	Sesamum indicum	10.000 ml
Sahachara	Barleria strigosa	7.7778 g
Paya	Milk	40.000 ml
Nata	Valeriana jatamansi	0.078 g
Shadgrandha	Premna corymbosa	0.078 g
Sthira	Desmodium gangeticum	0.078 g
Kustha	Saussurea costus	0.078 g
Surahva	Cedrus deodara	0.078 g
Ela	Elettaria cardamomum	0.078 g
Nalada	Vetiveria zizanioides	0.078 g
Saileya	Parmelia perlata	0.078 g
Satahva	Anethum graveolens	0.078 g
Raktachandana	Pterocarpus santalinus	0.078 g
Sarjarsa	Vateria indica	1.560g
Manjishtha	Rubia cordifolia	0.078g
Sariva	Hemidesmus indicus	0.078g
Yasthi	Glycyrrhiza glabra	0.078g
Cream Base		q.s.

DIRECTION FOR USE :

Apply from the shoulder to the tips of the hands fingers. Apply gently from the knees to the soles of the feet. Apply gently over affected area. For best results apply 2-3 times a day.

USEFUL IN : Numbness • Pricking Pain • Burning Sensation • Promotes & Regulates Blood Flow

Pack : 100 g M.R.P. Rs. 530.00



NERVOACT GOLD CAPSULES

NATURAL NERVINE STRENGTHENER स्वर्ण युक्त बृहत वात चिंतामणि रस

Composition : Each 500 mg capsule contains :

Ingredients	Botanical Name	Part	Qty
Brihatvata Chintamani Rasa	Classical Ayurvedic formulation	-	50 mg
Trayodashanga Guggul	Classical Ayurvedic formulation	-	90 mg
Dashmool Extract	Combination of ten roots	Root	160 mg
Garlic Extract	Allium sativum	Bulb	50 mg
Bala Extract	Sida cordifolia	Root	50 mg
Erand Extract	Ricinus communis	Root	50 mg
Kaunch Seed Extract	Mucuna pruriens	Seed	50 mg

Useful in :

Sula, Katigraha, Vatarakta.

Dosage : As directed by the physician.

**Pack : 10 x 1 x 10 Capsules
M.R.P. Rs. 4600.00 (460/- per strip)**



SKIN CARE, VITILGO, PSORIASIS, WART & BLOOD PURIFIER



ARATAVIN Alopecia areata Spray

FOR ALOPECIA AREATA
(PATCHY HAIR LOSS)
एलोपेसिया एरिटा (बालखोरा) में उपयोगी

Each ml contains :-

Palasha 2.5 mg, Spear Mint 2.5 mg, Mirchya 2.5 mg, Prasanna q.s.

Useful in :

Alopecia (Baldness)

Processed with lemon (Citrus limon) to give refreshing Lemon Flavour and to promote hair health and growth.

Usage : Spray a generous amount on the affected parts of scalp with hair loss, followed by a gentle massage for 2-3 minutes. Leave it applied overnight and wash your hair the next morning.

Pack : 100 ml M.R.P. Rs. 500.00



YOUSHINE[®] CAPSULE

DARK SPOT CORRECTOR

रक्त शोधक, कील मुहांसे,
फोडा फुन्सी, आँखो के नीचे
काले घेरे, झाइयों में लाभकारी

Each 500 mg capsule contains :

Ushba (Sariva) 71.42 mg, Manjishta 71.42 mg,
Saunf 71.42 mg, Unnab 71.42 mg,
Sapistan 71.42 mg, Hansraj 71.42 mg,
Gajwan 71.42 mg

Benefits :

- Improves skin disorders & dark spots,
- Removes Sun-Tanning,
Radiant Glowing Skin & Even Tone

Dosage : 1 capsule twice daily or
as directed by the physician.

Pack : 30 capsule M.R.P. Rs. 300.00



DERMASET TABLET

FOR MULTIPLE SKIN
PROBLEMS

फंगल इन्फेक्शन, दाद, खाज, खुजली,
एक्जिमा में लाभकारी लोशन

Each tablet contains :

Neem	Azadirachta indica	Lv	50 mg
Chirata	Swertia chirayita	Wp	50 mg
Rasount	Berberis aristata	Stm	50 mg
Revand khatai	Rheum emodi	Rt	50 mg
Reetha	Sapindus mukorossi	Frt	50 mg
Gandhak Amlasar	Yellow sulphur	Pdr	50 mg
Madar	Rheum emodi	Flr	50 mg

Useful in :

Helpful in Itching, Dry Eczema,
Ringworm and other fungal infections,
all types of psoriasis.

Dosage :

Tablet : One to two tablets thrice a day
with water after meal or as directed by
the physician.

Pack : 10 x 10 Tablet M.R.P. Rs. 1000.00



VITILSET CAPSULE

REPIGMENTATION OF
VITILIGINOUS SKIN

सफेद दाग, ल्यूकोडर्मा में लाभकारी

Each capsule contains :

Babuchi (Psoralea corylifolia)	71.42 mg
Haridra (Curcuma longa)	71.42 mg
Khadira (Acacia catechu)	71.42 mg
Sariva (Hemidesmus indicus)	71.42 mg
Kokudembo (Ficus hispida)	71.42 mg
Chabramanda (Cassia tora)	71.42 mg
Chakshushya (Cassia absuss)	71.42 mg

Useful in :

Helps in Repigmentation of Skin,
Supports Melanin Regulation,
Antibacterial, Anti Fungal and Antioxidant.

Dosage : One cap twice daily or
as directed by physician

Pack : 30 capsule M.R.P. Rs. 420.00



DERMASET LOTION

HELPFUL IN ITCHING,
DRY ECZEMA, RINGWORM AND
OTHER FUNGAL INFECTIONS,
ALL TYPES OF PSORIASIS.

फंगल इन्फेक्शन, दाद, खाज, खुजली,
एक्जिमा में लाभकारी लोशन

Each 100 ml made of :

Neem 1 g, Chirayta 1 g, Haridra 1 g, Daruhaldi 1 g,
Lal Chandan 1 g, Harataki 1 g, Bibhitaka 1 g,
Amalaki 1 g, Adusa 40 ml, Til Oil q.s., Lotion Base

Useful in : Helpful in Itching,
Dry Eczema, Ringworm and other fungal
infections, all types of psoriasis.

Application : Clean and dry out the affected area before
applying lotion. Apply twice a day morning & night on the
affected skin area of body or as directed by the physician.

Pack : 100 ml M.R.P. Rs. 300.00



DERMASET CREAM

ITCHING • IRRITATION
• FUNGAL INFECTION

दाद, खाज, खुजली में लाभकारी

Each ml. contains :

Neem 1 g, Chirayta 1 g, Haridra 1 g, Daruhaldi 1 g
Lal Chandan 1 g, Harataki 1 g, Bibhitaka 1 g, Amalaki 1 g
Adusa 1 g, Til Oil

Useful in :

Helpful in Itching,
Dry Eczema, Ringworm
and other fungal infections,
all types of psoriasis.

Direction to use : Clean and dry out the affected
area before applying cream. Apply a sufficient
quantity of the cream and massage gently on
affected skin area twice daily.



**Pack : 30 gm
M.R.P. Rs. 150.00**

PSORIASET

PSORIASIS CONTROL LOTION

Each 100 ml. Psoriasis lotion contains :
Kustha rakshasa taila 20 ml
 Kustha (Sausurea lappa), Saptaparna (Alstonia scholaris), Chitraka (Plumbago zeylanica) Rasa (Allium sativum), Bakuchi (Psoralea corylifolia), Aragwadha (Cassia fistula), Shuddha parad (Purified mercury) Shuddha Gandhaka (Purified sulphur) Rasa sindhura (a combination of mercury and sulphur) Tamra bhasma (Calcined copper) Manashila (Arsenic sulphide) Hartal (As2S3) Sarson ka tail (Mustard Oil)
Mahamarichyadi taila 20 ml
 Kali Mirch (Piper nigrum) Nisoth (Operculina turpethum) Danti Mool (Boiospermum montanum) Devdaru (Cedrus deodara) Gobar ka ras, Haldi (Curcuma longa) Daru Haldi (Berberis aristata) Jatamansi (Nardostachys jatamansi) Kuth (Sausurea lappa) Lal Chandan (Pterocarpus santalinus) Indrayan Mool (Citrullus colocynthis) Karanj ki Jad (Caesalpinia bonducella fleming) Chitrak Mool Chhal (Plumbago zeylanica) Kalihari (Gloriosa superba) Viavidang (Embellia ribes) Neem Chhal (Azadirachta indica) Giloy (Tinospora cordifolia) Amaltash (Cassia fistula) Nagar Motha (Cyperus scariosus) Pippal (Piper longum) Vach (Acorus calamus) Tela (Mustard Oil) (Brassica campestris) Lotion Base q.s.

Indications : RELIEVES REDNESS & SCALING

Pack : 100 ml. M.R.P. Rs. 340.00

RELIEVES REDNESS & SCALING

चर्म रोग सोरायसिस से होने वाले प्रभावों में लाभदायक

Application : Massage gently 2 times a day on the affected area. Allow natural light to act on affected area or as directed by the physician.



WARTCURE

LOTION

WART REMOVING LOTION
मस्से हटाने की रामबाण दवा

Wartcure Lotion

Each 10ml prepared from :

Sajji (Carbonate of Soda) Pdr 25 mg
 Lime (Calcium carbonate) Pdr 50 mg
 Garlic (Allium sativum) Blb 2.5 g

Useful in : Wart remover

Application :

Apply WARTCURE LOTION with the straw provided in this pack exactly on the wart. Repeat application after 12 hours. 5-6 applications are enough to remove the wart. Now apply antiseptic cream on the small wound (caused due to removal of wart) for 2-3 days. Antiseptic cream is also good for cuts, wounds and burns.

**Pack : Lotion 10 ml
 M.R.P. Rs. 255.00**



SOREACT™

LOTION

FOR MOUTH ULCER

Each 10ml prepared from:

Chameli (Jasminum grandiflorum) Lv 400 mg
 Giloe (Tinospora cordifolia) Stm 400 mg
 Munakka (Vitis vinifera) Frt 400 mg
 Dhama (Fagonia arabica) WP 400 mg
 Harad (Terminalia chebula) Frt 400 mg
 Daruhaldi (Berberis aristata) Stm 400 mg
 Bahera (Terminalia bellirica) Frt 400 mg
 Amla (Phyllanthus emblica) Frt 400 mg
 Suhaga (Sodii bitoras) 1.2 g
 Glyceriine q.s.

How to use : Pour few drops on tip of tongue or tip of finger and apply on affected area.

Pack : 10 ML M.R.P. Rs. 85.00



YOUSHINE®

SKIN CARE CREAM

DARK SPOT CORRECTOR

चेहरे के दाग धब्बे, झाइयों में लाभकारी

Each ml. contains :

Raktcandana 2%, Manjistha 2%, Lodhra 2%
 Kutha 2%, Priyangu 2%, Nyagrodha 2%, Masur 2%

Useful in :

Improves skin disorders & dark spots,
 Removes Sun-Tanning,
 Radiant Glowing Skin &
 Even Tone

Direction to use :

Take an appropriate amount of cream apply on the affected area & gently massage the cream till it get absorbed.



**Pack : 30 gm
 M.R.P. Rs. 160.00**

VITILSET

LOTION

REPIGMENTATION OF VITILIGINOUS SKIN

सफेद दाग, ल्यूकोडर्मा में लाभकारी

Composition :

Bakuci 4%, Hartal 1%, Karanja 2%
 Arka 2%, Amaltas 2%, Patarsnuhi 2%
 Jati 2%

Useful in :

Helps in repigmentation of Vitiliginous skin

Application : Massage gently 2 times a day on the affected area. Allow natural light to act on affected area or as directed by the physician.

Pack : 100 ml M.R.P. Rs. 340.00



YOUSHINE-AP

ANTI ACNE & PIMPLE CREAM

कील मुहासों में लाभदायक

Each ml. contains :

Neem	<i>Azadirachta indica</i>	Lv	2%
Manjistha	<i>Rubia cordifolia</i>	Stm	2%
Fenugreek	<i>Trigonella foenum</i>	Sd	2%
Birch	<i>Betula utilis</i>	St. Bk	2%
Rose	<i>Rosa rubiginosa</i>	Flr	2%
Turmeric	<i>Curcuma longa</i>	Rhz	2%
Aloevera	<i>Aloe barbadensis</i>	Lv	2%

Useful in :

Controls acne, pimples and scars.
 Keeps skin soft

Directions for use :

Apply sufficient quantity on the affected area and massage gently till absorbed. Use twice daily or as directed by the physician.

**Pack : 30 gm
 M.R.P. 180.00**



YOUSHINE®

SYRUP

FORMULA FOR BLOOD PURIFIER

रक्त शोधक, कील मुहासों, फोड़ा, फुन्सी, आखों के नीचे काले घेरे, छाईयों के लिये लाभकारी

Each 10ml contains :-

Kalmegh ext. 150mg, Tulsi ext. 150mg, Brahmhi ext. 150mg,
 Madder ext. 100mg, Senna ext. 100mg, Revand chini ext. 100mg,
 Daruhaldi ext. 100mg, Afsanteen ext. 100mg,
 Kachoor ext. 50mg, Amla 50mg, Giloy ext. 50mg,
 Chirata ext. 50mg, Pittapada 50mg, Neem ext. 40mg

Usage and Benefits :

It relieves constipation, prevents and cures boils, pimples, skin eruption and epistaxis. It has cathartic, apparent and purgative action hence evacuating the bowels and cleaning its toxic materials. It contracts the living tissues and thus reduces the flow of secretions and discharges. It also has vermifuge effect and expels intestinal parasites.

DOSAGE

Syrup: Two teaspoonfuls plain or with a cup of milk twice a day. For children, doses vary according to age 1/3 to 1/2 teaspoon or as directed by the physician.

Pack : 200ml. M.R.P. Rs. 160.00



PSORIASET

CAPSULE

RELIEVES REDNESS & SCALING

चर्म रोग सोरायसिस से होने वाले प्रभावों में लाभदायक

Composition :

Each 500mg cap contains :

Patola (Trichosanthes dioica)	83.33 mg
Katurohini (Picrorhiza kurroa)	83.33 mg
Chandana (Santalum album)	83.33 mg
Madhusrava (Marsdenia tenacissima)	83.33 mg
Guluchi (Tinospora cordifolia)	83.33 mg
Patha (Cyclea peltata)	83.33 mg

Indications :

Psoriasis of Skin & Scalp

Dosage :

1-2 capsules twice daily with luke warm water or as directed by the physician.

Pack : 30 capsule M.R.P. Rs. 375.00



MALE SEXUAL WELLNESS & INFERTILITY



TOPSPERM CAPSULE

MEN REJUVENATOR
शुक्राणु वर्धक

Composition :

Each 500mg capsule contains :
Shatavar 71.4 mg, Kapi Kacchu 71.4 mg,
Gokhru 71.4 mg, Nagbala 71.4 mg,
Atibala 71.4 mg, Makahne 71.4 mg,
Ashwagandha 71.4 mg

Useful in :

- Increases sperm count & motility
- Improves quality of sperm

Dosage : Take two Capsules with milk or water or advised by the physician.

Pack : 30 Capsules M.R.P. Rs. 550.00



SHILAJIT MALT

शिलाजीत माल्ट

Composition :

Each 5ml contains aqueous extracts of :
Shilajit 250 mg, Soyabean 100 mg, Ashwagandha 100 mg,
Shatavari 100 mg, Vidhara 100 mg, Vidarikand 100 mg,
Safed Musli 50 mg, Amla 100 mg, Sounth 50 mg,
Mulathi 100 mg, Shankhpushpi 50 mg,
Khajur 50 mg, Gangeran 100 mg, Gokhru 20 mg,
Amrita 50 mg.

Dosage : 1-2 teaspoonful twice a day with milk or as directed by the physician.

Pack : 400 gm M.R.P. Rs. 410.00



CHARGEFIL[®] PLUS (1000 mg) TABLET

Power Booster
Tablets For Men
स्टैमिना एवं शक्तिवर्धक

Each 1000 mg tablet contains :
Ashwagandha (Withania Somnifera) Rt 100 mg
Shudh Shilajit (Purified Asphaltum) Exd 100 mg
Kaunch (Mucuna pruriens) Sd 100 mg
Gokshura (Tribulus terrestris) Fr 125 mg
Shatavari (Asparagus racemosus) Rt 150 mg
Talmakhana (Asteracantha longifolia) Sd 150 mg
Safed Musli (Chlorophytum borivilianum) Tr 175 mg
Kesar (Crocus sativus) Stg 2 mg
Lata Kasturi (Hibiscus abelmoschus) Sd 10 mg
Vang Bhasma (Calcined Tin) Bh. 8 mg
Dalchini (Cinnamomum zeylanica) Bk 10 mg
Jaiphall (Myristica fragrans) Ft 10 mg
Akarkara (Anacyclus pyrethrum) Rt 20 mg
Salam Punja (Orchis latifolia) Rt Tr 40 mg
Inert binder-Gum Acacia-5% q.s.

Useful in :

- Loss of libido • Erectile dysfunction
- Functional impotency
- Sexual Debility • Premature ejaculation

Dosage : 1 tablet at night before going to bed or as advised by the physician.

Pack : 30 Tablets M.R.P. Rs. 1020.00



CHARGEFIL[®] PLUS TABLET

Power Booster
Tablets For Men
स्टैमिना एवं शक्तिवर्धक

Composition :

Each 1000 mg tablet contains :
Ashwagandha (Withania Somnifera) 100 mg Vang Bhasma (Calcined Tin) 8 mg
Shudh Shilajit (Purified Asphaltum) 100 mg Dalchini (Cinnamomum zeylanica) 10 mg
Kaunch (Mucuna pruriens) 100 mg Jaiphall (Myristica fragrans) 10 mg
Gokshura (Tribulus terrestris) 125 mg Akarkara (Anacyclus pyrethrum) 20 mg
Shatavari (Asparagus racemosus) 150 mg Salam Punja (Orchis latifolia) 40 mg
Talmakhana (Asteracantha longifolia) 150 mg Inert binder-Gum Acacia-5% q.s.
Safed Musli (Chlorophytum borivilianum) 175 mg
Kesar (Crocus sativus) 2 mg
Lata Kasturi (Hibiscus abelmoschus) 10 mg

Useful in :

- Loss of libido • Erectile dysfunction
- Functional impotency
- Sexual Debility
- Premature ejaculation

Dosage : 1 tablet at night before going to bed or as advised by the physician.

Pack : 10 X 1 X 10 Tablets M.R.P. Rs. 3500.00



SUPERACT-99 SENIOR TABLET

SUPPORTS PERFORMANCE, VITALITY & STAMINA

Composition : Each 1000 mg Tablet contains :

Kali Musli 100 mg, Safed Musli 125 mg, Vidarikand 90 mg,
Kooth 75 mg, Shudh Shilajit 75 mg, Makardhwaj 20 mg,
Swarn Vang 18 mg, Pipplamool 35 mg, Javitri 25 mg,
Khaskhas 50 mg, Kaunch 60 mg, Lavang 30 mg,
Saffron 2 mg, Sonth 25 mg, Ashwagandha 100 mg,
Mundi 100 mg, Shankhpushpi 70 mg

Indications :

Loss of Libido, Psychic Sexual Disturbance, Erectile dysfunction, Loss of Vigour, Vitality, Sexual debility & General Weakness.

Dosage : 1 tablet in morning & 1 tablet at night before going to bed or as advised by the physician.

Pack : 30 Tablet M.R.P. Rs. 1020.00



CHARGEFIL[®] MASSAGE OIL FOR MEN

PERFORMANCE ENHANCER IN MEN REJUVENATES BODY
पुरुषों के लिए मसाज ऑयल, पावर तेल

Each 10ml. Til Oil processed with :-

Sankhya, Jaipha, Japatri, Khurasani jowain, Vijaya, Lavanga, Ajowin, Ajmod each 2.5 g, Malkangani 5 g, Kesar 0.07 g

Usage and Benefits :

CHARGEFIL OIL help in reducing sex related problems, reproductive organs, increases energy of the body. It also increases time duration of intercourse. Increase desire & sustains staying power.

- Boost Sexual Power • Improve Sexual Timing
- Rock Hard Erection • Boost Sexual Stamina
- Increase Sex Drive

DIRECTIONS FOR USE :

Take 1 drop in anytime or as directed by the physician.

Pack : 20 ml. M.R.P. Rs. 350.00



SD YOG™ GRANULES

FORMULA FOR PREMATURE
EJACULATION/NIGHT FALL

शीघ्रपतन तथा स्वप्नदोष के लिए

Each 10 gm. of powder contains :-

Shatavar 1 gm, Ashwagandha 1 gm, Kouch 1 gm,
Gokhru 1 gm, Nagbala 1 gm, Atibala 1 gm,
Makahne 1 gm, Sugar Candy q.s.

Usage and Benefits :

Helps to controls Night pollution (night fall),
increase sperm count and reproduce semen
quantity and makes semen thick and purify
semen premature ejaculation,
supermatorrhoea, weakness urinary
disorders, debility from old age and
body energier.

Pack : 50 gm. M.R.P. Rs. 295.00

Dosage : One teaspoon twice
or thrice a day with milk or
as directed by the physician.



PURE SHILAJIT RESIN

NATURALLY PROMOTES
STRENGTH, ENERGY &
STAMINA

Exquisite Resin from the
High Altitudes of Himalayas.

Composition :

Each 20g contains :
Pure Himalayan Shilajit Resin 20 g

Useful in :

Enhanced Stamina • Endurance & Vitality
Antioxidant • Improve Immunity

DIRECTION FOR USE :

Take a pea size amount of Shilajit Resin
with the help of spoon provided. Dissolve it
in lukewarm water/milk/green tea.
Consume it twice a day for maximum health benefits.



Pack : 20 gm. M.R.P. Rs. 1390.00

CHARGEFIL® CAPSULE

PERFORMANCE ENHANCER IN MEN
REJUVENATES BODY

वीर्य वर्धक एवं बल वर्धक

Composition :

Each hard gelatin capsule contains :
Swarna Mashik Bhasma 10 mg,
Safed Musli 50 mg, Aloe vera 50 mg,
Kali Musli 50 mg, Naikurana/Kaunchbeej 65 mg,
Ashwagandha 50 mg, Amla/Nelikai 50 mg,
Gokhru 25 mg, Vayalchulli/Talmakhana 50 mg,
Jaiphal 50 mg, Shilajit 50 mg

Useful in :

- Loss of libido • Erectile dysfunction
- Functional impotency • Sexual Debility
- Premature ejaculation

Dosage : 1 capsule twice daily or
as directed by the physician.

Pack : 30 capsule M.R.P. Rs. 810.00



OVUMSET CAPSULE FOR WOMEN

Helps Improve egg growth &
quality

अन्डा कोशिकाएं एंव गुणवत्ता वर्धक

Each capsule contains :

Jiyopota (Putranjiva roxburghii)	Sd	100mg
Dashmul (Dashmoola)	Rt	75mg
Shatavari (Asparagus racemosus)	Rt	75mg
Ashwagandha (Withania somnifera)	Rt	50mg
Jeevanti (Leptadenia reticulata)	Rt	50mg
Nagkeshar (Mesua ferrea)	Sta	50mg
Ashoka (Saraca asoca)	St Bk	20 mg
Lodhra (Symplocos raemosa)	St Bk	20mg
Amalaki (Phyllanthus emblica)	Frt	20mg
Daruharidra (Berberis aristata)	Rt	20mg
Jethimadh (Glycyrrhiza glabra)	Rt	20mg

Useful in :

Helps improve egg growth and quality,
helps achieve natural pregnancy,
supports timely ovulation and helps
strengthen reproductive system.

Usage : Take one Capsules twice daily with water
or as advised.

Pack : 30 capsule M.R.P. Rs. 550.00



UTI, KIDNEY STONE & KIDNEY CARE



SB ALKA SYRIP

HERBAL ALKALIZER & DIURETIC SYRUP

हर्बल अलकेलाईज़र सिरप

Composition :

Each 5ml contains aqua extracts of :

Gokhru (Tribulus terretris)	Fr	125 mg
Amaltas (Casia fistula)	Plp	125 mg
Durva (Cynodon dactylon)	Wp	125 mg
Pashanbhed (Berginia ciliate)	Stm	125 mg
Haritaki (Terminalia chebula)	Fr	125 mg
Dhamasa (Fagonia cretica)	Wp	125 mg
Kasa (Saccharum spontaneum)	Rt	125 mg

Useful in : Dysuria, Burning Micturition, U.T.I.

Dosage : 2-3 teaspoonful 2-3 times a day or as directed by the physician.

Pack : 200ml. M.R.P. Rs. 160.00



STONEACT

KIDNEY STONE TONIC & CAPSULE

EFFECTIVE TREATMENT FOR KIDNEY STONE

गुर्दों की पथरी के लिये रामबाण दवा

Each 10ml contains aqua extract of :

Pashanbhed 300 mg, Varun 300 mg, Kulthi 100 mg, Punarva 300 mg, Gokshura 300 mg, Apamarg 100 mg, Durva 200 mg, Palashpushp 100 mg, Sugar q.s.

Each 500 mg capsule contains extracts of :

Pashanbhed 125 mg, Varun 125 mg, Kulthi 50 mg, Punarva 50 mg, Gokshura 50 mg, Moolikshar 50 mg, Apamarg 50 mg

Useful in : Kidney Stones

Dosage : Children and adult receive the same dose The recommended single dose is 2 capsules empty stomach in the morning with a glass of lime water for 9 days

Dosage : Adults 5 to 10 ml. twice a day with water or as directed by the physician.

Combo Pack : 200 ml + 18 Capsules M.R.P. Rs. 400.00



STONEACT SACHET

A NATURAL & TASTY WAY TO DISSOLVE & EXPEL CALCULI

गुर्दों की पथरी के लिए रामबाण दवा

Each 5g sachet contains :

Varuna 100 mg, Sunthi 100 mg, Gokhru 100 mg, Pashanbhed 100 mg, HazrulYahood 100 mg

Other Excipients : Svarjiksara, Nimbukamlam, Sucralose, Permitted colors and flavours.

Dosage : Dissolve one sachet (5g) of Stoneact in a glass of water (150ml). Drink as soon as it has completely dissolved in the water twice daily.

Pack : 16 sachet of 5 gm each M.R.P. Rs. 440.00



UROACT CAPSULE

HERBAL CAPSULES FOR URINARY TRACT INFECTIONS

मूत्र मार्ग के संक्रमण में लाभकारी

Composition :

Each capsules contains :

Uvaursi ext. 100mg, Grape seed ext. 60mg, Biranjasif ext. 60mg, Ayapan ext. 60mg, Dandelion leaf ext. 60mg, Garlic ext. 60mg, Daru haldi ext. 50mg, Licorice ext. 50mg

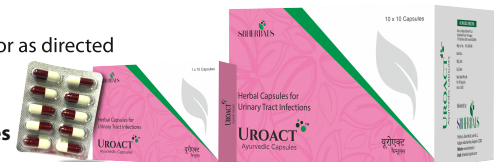
Useful in :

Useful in treatment of urinary tract infection, bacterial & fungal infection, burning sensation and decreased urine flow.

Dosage :

2 Capsules 2 time in a day or as directed by the physician

Pack : 10 x 1 x 10 Capsules M.R.P. Rs. 900.00



UROACT SYRUP

FOR URINARY TRACT INFECTIONS

मूत्र मार्ग के संक्रमण में लाभकारी

Composition :

Each 10ml contains :

Gokshura	50 mg	Shatavari	50 mg
Varuna	50 mg	Trikatu.	16.5 mg
Sariva	50 mg	Ela	16.5 mg
Musta	50 mg	Kshara Parpati	75 mg
Ushira	50 mg		

Useful in :

Useful in treatment of urinary tract infection, bacterial & fungal infection, burning sensation and decreased urine flow.

Dosage : One to two teaspoonful after each meal.

Pack : 200 ml M.R.P. Rs. 180.00



UROACT FIZZ

THE EFFICIENT HERBAL CARE FOR UTI

EFFERVESCENT TABLETS

Each 5g sachet contains :

D-Mannose (Fruit Sugar) 600 mg, Indian Cranberry Extract (Carissa carandas Fr) 300 mg, Hibiscus Extract (Hibiscus rosasinensis Flr) 100 mg, Varun (Crataeva nurvala Bk) 75 mg, Punarva (Boerhaaviadiffusa Rt) 75 mg, Kasni (Cichorium intybus WP) 75 mg, Gokhru (Tribulus terrestris Frt) 75 mg, Sodium Bicarbonate 1500 mg

Useful in :

Useful in treatment of urinary tract infection, bacterial & fungal infection, burning sensation and decreased urine flow.

Pack : 16 Sachets of 5 gm M.R.P. Rs. 480.00

DIRECTION FOR USE:

- Step 1:** Take 200ml of lukewarm water in a glass.
- Step 2:** Empty the sachet in glass of water.
- Step 3:** Drink as soon as it completely dissolves in water.



NEFRAWIN SYRUP KFT

A COMPLETE KIDNEY CARE SYRUP

स्वस्थ गुर्दे, मूत्र प्रणाली को मजबूत बनाने
एवं पीठ के निचले हिस्से के दर्द में उपयोगी

Common Name			Guduci (Tinospora cordifolia)	Stem	200 mg
Pasabheda (Bergenia ligulata)	Root	200 mg	Apamarga (Achyranthes aspera)	Whole plant	200 mg
Saguna (Moringa oleifera)	Seed	200 mg	Ksira (Cucumis sativus)	Seed	200 mg
Erand karkati (Carica papaya)	Root	200 mg	Jatamansi (Nardostachys jatamansi)	Root	200 mg
Satavari (Asparagus racemosus)	Root	200 mg	Parasika javani (Hyoscyamus niger)	Seed	200 mg
Gokshura (Tribulus terrestris)	Fruit	200 mg	Daruharidra (Berberis aristata)	Stem bark	200 mg
Varuna (Crataeva nurvala)	Stem bark	200 mg	Haridra (Curcuma longa)	Rhizome	200 mg
Kusha (Desmostachya bipinnata)	Root	200 mg	Shunthi (Zingiber officinale)	Rhizome	200 mg
Vishnukranti (Evolvulus alsinoides)	Root	200 mg	Haritaki (Terminalia chebulu)	Fruit	200 mg
Sali (Oryza sativa)	Root	200 mg	Chitraka (Plumbago zeylanica)	Root	200 mg
Punarva (Boerhavia diffusa)	Root	200 mg	Bharangi (Clerodendrum serratum)	Root	200 mg
			Devadaru (Cedrus deodara)	Heartwood	200 mg

Indications :

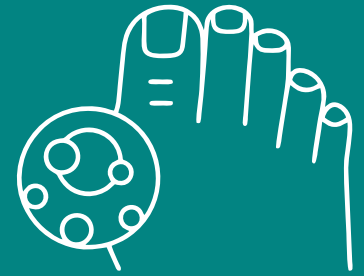
Nephritis, Nephropathy, Impaired GFR, Poor
Renal Function, Anasarca, Odema & Other
Urinary Disorders.

Dosage : 10 ml thrice a day or as directed by the physician

Pack : 200ml. M.R.P. Rs. 495.00



URIC ACID & THYROID MANAGEMENT



URICSET SYRUP

URIC ACID MANAGEMENT
शरीर में बढ़े हुए युरिक एसिड के स्तर को कम करने में सहायक

Each 10ml. contains aqua extracts of :
 Punerva (Boerhaavia diffusa) Rt 250mg
 Musta (Cyperus rotundus) Rt 200mg
 Varuna (Crateva nurvala) Bk 150mg
 Giloy (Tinospora cordifolia) Stm 125mg
 Gokhru (Tribulus terrestris) Frt 125mg
 Turmeric (Curcuma longa) Rz 125mg
 Shunthi (Zingiber officinale) Rz 125mg
 Dhanyaka (Coriander sativum) Frt 125mg

Useful in :
 Uric Acid, Joint Pain, Swelling, Gouty Arthritis.

Dosage:
 One to two teaspoonful after each meal.

Pack : 200ml. M.R.P. Rs. 170.00



URICSET CAPSULE

URIC ACID MANAGEMENT
शरीर में बढ़े हुए युरिक एसिड के स्तर को कम करने में सहायक

Each 500 mg contains extracts of :
 Punerva 100 mg, Gugul 100 mg,
 Musta 80 mg, Varuna 70 mg,
 Giloy 50 mg, Turmeric 50 mg,
 Shunthi 50 mg

Benefits :
 • Supports Healthy Uric Acid Levels
 • Promotes Normal Kidney Function

Usage : 1 capsule twice daily with water or as advised.

Pack : 30 capsule M.R.P. Rs. 360.00



THYROACT CAPSULE

HEALTHY THYROID FUNCTION
थायराइड संबंधी विकारों में लाभकारी

Each 500 mg capsule contains (extracts) :
 Hamsapadi 100 mg, Nimba 100 mg
 Guduchi 100 mg, Pippali 100 mg
 Vasa 100 mg

Useful in :
 Helps to treat Thyroid,
 correct Hormonal Imbalance.

Dose : 1-2 capsules twice a day or
 as advised by the physician.

Pack : 30 Capsules M.R.P. Rs. 360.00



ANXIETY & SLEEP DISORDER



MINDEASE TABLET

STRESS RELIEF TABLET

मानसिक तनाव, चिंता एवं
बैचेनी में सहायक

Composition :

Each tablet contains :
Brahmi 50 mg, Malkangni 80 mg,
Sarpagandha 100 mg, Jatamansi 80 mg,
Vacha 50 mg, Ashwagandha 50 mg,
Shankhapuspi 50 mg, Tagar 40 mg,

Useful in :

- Helps to relieve stress & anxiety
- Helps in mood enhancer
- Helps to fight mental fatigue

Dosage : 1 tablet twice daily or
as directed by the physician.

Pack : 10 x 10 Tablets
M.R.P. Rs. 1000.00



NINDSET[®] TABLET

FOR SLEEP DISORDER

निद्रा चक्र को बेहतर बनाने में,
तनाव मुक्त नींद में सहायक

Composition :

Each tablet contains :-
Tagar 400mg, Jatamansi 100mg

**Nindset has mild relaxant
properties,
useful in sleep disorders.**

DOSAGE :

One tablet at night before sleep
or as directed by the physician.

Pack : 10 x 1 x 10 Tablets
M.R.P. Rs. 1000.00



DENTAL CARE



DENTOACT HERBAL TOOTHPASTE

NATURAL PROTECTION FOR
STRONG TEETH & HEALTHY GUMS

मसूड़ों में खून, पायोस्त्रिया, दांत दर्द,
ठंडा गर्म लगने में उपयोगी

DentoAct Toothpaste is enriched with extracts of effective natural herbs like Neem, Babul, Pilu etc. which helps fight germs & prevents toothache, bleeding gums, cavities, plaque & giving clean mouth and long lasting fresh breath.

Each 100 g contains :

Anar Ext. 0.257 g, Tumburoo Ext. 0.180 g, Babool Ext. 0.171 g, Nirgundi Ext. 0.114 g
Vayvidang Ext. 0.171 g, Triphala Ext. 0.171 g, Pilu 0.500 g, Durgandh Khair 0.600 g,
Kattha 0.800 g, Mousliri 0.400 g, Neem 0.144 g, Ajmoda 0.100 g, Clove Oil 0.100 g
Vaikranta Bhasma 0.200 g, Excipients q.s. Ref: Bhavpraksha

Benefits :

- Protection from harmful germs
- Helps remove plaque • Long lasting fresh breath • Refreshing taste • Helps reduce bleeding gum and prevents inflammation
- Helps prevent toothache and decay

Direction for use : Brush twice daily. For children under the age of 6, use a pea-sized amount under adult supervision. Do not swallow.



Pack : 100 gm M.R.P. Rs. 130.00

WEIGHT MANAGEMENT



YOUSLIM™ CHURNA

WEIGHT REDUCTION,
HELPS BURN FAT,
SKIN, BLOOD & TISSUE HEALTH

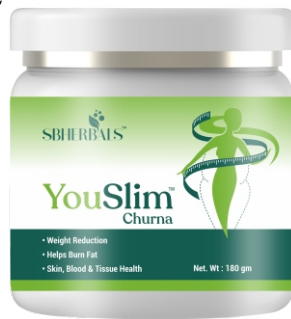
Each 5 g consists of :

Jeera 600 mg, Alsi 500 mg, Saunf 400 mg, Curry Patta 300 mg, Kali Harad 300 mg, Harad 300 mg, Bahera 300 mg, Amla 300 mg, Sunthi 300 mg, Nagarmotha 300 mg, Vay-vidang 300 mg, Chitrak 300 mg, Kali Mirch 250 mg, Pippali 250 mg, Haridra 200 mg, Saindha 100 mg

YouSlim Powder is the wonderful combination of sixteen herbs which act collectively to give you a slim and fit body with a improved digestive system. YouSlim Powder reduces excessive appetite and remove extra fat from the areas which are prone to fat deposition like face, neck, waist, abdomen, buttocks and legs. YouSlim Powder prevent fluid loss and weight regains.

Dosage : 3-5 g powder twice a day with luke warm water.

Pack : 180 gm M.R.P. Rs. 1125.00



WEIGHT GAIN MANAGEMENT POWDER

HERBAL FORMULA FOR
WEIGHT MANAGEMENT

वजन बढ़ाने में सहायक

Each 10 g powder contains :

Ashwaganda	Withania somnifera	Rt	1.25g
Shatavri	Asparagus racemosus	Rt	1.25g
Vidarikand	Pueraria tuberosa	Rt	1.25g
Bala	Sida cordifolia	WP	1.25g
Jeeraka	Cuminum cyminum	Frnt	200 mg
Kalanamak	Sodium chloride	Pdr	200 mg
Sugar Candy			q.s.

Usage :

- Supports weight gain • Supports muscle growth
- Improves strength

Usage : One sachet twice a day or as directed by physician.

**Pack : 90 g (30 sachets each 3 g)
M.R.P. Rs. : 900.00**



YOUSLIM™ CAPSULE

WEIGHT LOSS CAPSULES

शरीर के बड़े हुए वज़न को कम
करने में सहायक

Each capsule contains :

Vriksh mala 75 mg, Gurmar 50 mg, Green Tea 50 mg, Guggul 75 mg, Triphala 150 mg, Kuki 50 mg, Haridra 50 mg

Useful in :

- Weight Reduction • Helps Burn Fat
- Skin, Blood & Tissue Health

Usage :

1 capsule twice daily with water or as advised.

Pack : 60 Capsules M.R.P. Rs. 1125.00



EYE & EAR CARE



OPTIHERB LUBRICANT EYE DROP

HERBAL DISTILLATES EYE DROPS

आंखों में लालीपन, जलन, खुजली तथा आंखों के सूखेपन में सहायक

Each 10 ml. contains distillate :

Rose 500 mg, Haritaki 500 mg, Bibhitaka 500 mg, Amalaki 500 mg, Tulsi 500 mg, Yawani 100 mg, Neem 10 mg, Bhringraj 500 mg, Punerva 500 mg, Clove 50 mg, Haridra 500 mg

Other Ingredients :

Sodium Carboxymethyl Cellulose 0.05% v/v, Phenylethyl alcohol 0.05% v/v, Benzalkonium Chloride Solution 0.02% v/v



Pack : 10ml. M.R.P. Rs. 80.00

OTIHERB EAR DROP

NATURAL REMEDY FOR EAR CARE

ओटीहर्ब कान की ड्रप

Composition :

Each 10ml made with :

Vacha	Acorus calamus	0.4 g
Rasona	Allium sativum	0.4 g
Haridra	Curcuma longa	0.4 g
Bilva	Aegle marmelos	10 ml
Til Oil		10 ml

Useful in :

Ear diseases, Tinnitus, Ear discharge.

Dosage :-

2-3 Drops 3-4 time in a day or as directed by the Physician.

Pack : 15 ml M.R.P. Rs. 110.00



HAIR CARE



KESH101 HAIR CAPSULE

Each 500 mg capsule contains extracts of :

Alsi (Linum usitatissimum) Sd	150 mg
Bhringraja (Eclipta alba) W.P.	100 mg
Ashwagandha (Withania somnifera) Rt.	60 mg
Brahmi (Bacopa monnieri) W.P.	50 mg
Yashtimadhu (Glycyrrhiza glabra) Rt.	40 mg
Shankpushpi (Convolvulus pluricaulis) Frt	40 mg
Mandukaparni (Centella asiatica) W.P.	40 mg
Hibiscus (Hibiscus rosa sinensis) Flv	20 mg

Dosage :
Take one capsule twice daily with water or as directed by the physician.

Pack : 30 Capsules M.R.P. Rs. 370.00

CONTROL HAIR FALL, GROWS HAIR LONGER SUITABLE FOR BOTH MEN & WOMEN

बालों को झड़ने एवं रूसी से बचाए,
नये बाल उगाने में उपयोगी



KESH 101 HAIR OIL

ANTI HAIR FALL HAIR OIL

बालों को झड़ने एवं रूसी से बचाए,
नये बाल उगाने में उपयोगी

INGREDIENTS :

Canaka 100 mg, Tulsi 100 mg, Palasha 25 mg, Bhringraja 25 mg, Yashtimadhu 25 mg, Amalaki 20 mg, Bibhitaka 20 mg, Haritaki 20 mg, Narikela 200 mg, Til Oil q.s.

Directions for use :

Apply desired amount of Kesh101 Hair Oil to your palms depending on hair thickness and length. Rub the oil between palms and apply to hair and scalp. Massage into roots to mid-lengths and ends. Leave it for about an hour or overnight. For best result, use it twice weekly.

Pack : 120 ml M.R.P. Rs. 210.00



RED ONION HAIR OIL WITH BLACK SEEDS

बालों को झड़ने से रोके तथा नये
बाल उगाने में लाभकारी

100ml. oil processed with:

Black seed Gingelly oil (Sesamum indicum) Sd Q.S., Castor Oil (Ricinus communis) Sd 20ml., Coconut (Cocos nucifera) Frt 10ml., Onion Juice (Allium cepa) Frt 10ml., Neem Azadirachta indica Lv 2.5g, Amla (Embilica officinalis) Frt 8.5g, Shatavari (Asparagus racemosus) Rt 2.5g, Aloe vera (Aloe barbadensis) Lv gel 3.5g, Brahmi (Bacopa monnieri) WP 7g, Bhringraja (Eclipta alba) WP 5g, Jatamansi (Nardostachys jatamansi) Rt 3g

Useful in : Anti Hair Fall, Controls Dandruff, Boosts Hair Growth, Smooth & Shiny Hair.

How to Use:

Step 1 : Apply a few drops directly on scalp & massage with fingertips to help the Oil penetrate into roots of your hair. **Step 2 :** Leave it overnight or for few hours. **Step 3 :** Wash off with a sulfate-free shampoo

Pack : 100 ml. M.R.P. Rs. 260.00



INFECTIONS, PLATELETS ENHANCER & ANTIBIOTICS



PLATOACT SYRUP

PLATELETS ENHANCER TONIC

प्लेटलेट्स की संख्या को नियमित करने, डेगू और अन्य वायरल बुखार में उपयोगी

Composition :

Each 5 ml contains extracts of :

Giloy 200 mg, Carica Papaya 400 mg, Kiwis fruit 100 mg, Tulsi 100 mg, Amla 100 mg, Pomegranate 200 mg, Ashwagandha 200 mg, Black Pepper 50 mg, Flavoured syrupy base q.s.

Useful in :

Increases low platelet count and immunity

Dosage : One to two teaspoonful

thrice a day before meals or as directed by the physician.

Pack : 200ml. M.R.P. Rs. 180.00



SB BIOTIC CAPSULE

A HERBAL ANTIBIOTIC

एंटीबायोटिक (रोग प्रतिरोधक दवा) कैप्सूलस

Composition

Each capsule contains :-

Guduchi 90 mg, Neem 60 mg, Amla 40 mg, Manjishtha 40 mg, Yashtimadhu 25 mg, Shudh Guggal Somlata 30 mg, Haridra 60 mg, Kushta 30 mg, Punernava 40 mg, Tulsi 20 mg, Shankh Bhasam 40 mg

Dosage :

One capsule twice daily.

Pack : 30 capsule M.R.P. Rs. 300.00



PLATOACT PLUS TABLET

CARICA PAPAYA LEAF EXTRACT, TINOSPORA CORDIFOLIA EXTRACT & GOAT MILK POWDER

प्लेटलेट की संख्या को नियमित करने, डेगू और अन्य वायरल बुखार में उपयोगी

Composition :

Each tablet contains :

Carica Papaya Leaf Extract 1100 mg
Tinospora Cordifolia Extract 150 mg
Goat Milk Powder 100 mg

Useful in :

- Increase Blood Platelets
- Promotes Nutrients Absorption
- Helps Immune System

Dosage :

One tablets three times a day or as directed by the physician.

Pack : 10 x 10 Tablets

M.R.P. Rs. 2350.00



SBFLAM-ESR CAPSULES

ANTI-INFLAMMATORY REDUCES ESR PROTECTS BODY CELLS

सूजन रोधी एवं शरीर से ESR-स्तर को कम करने में सहायक

Composition :

Each 500mg cap contains :

Sahachara	<i>Barleria prionitis</i>	100 mg
Devdaru	<i>Cedrus deodara</i>	66.66 mg
Sunthi	<i>Zingiber officinale</i>	33.33 mg
Amlasar Gandhak	Purified yellow sulfur	50 mg
Neem	<i>Azadirachta indica</i>	50 mg
Ashwagandha	<i>Withania somnifera</i>	33.33 mg
Guduchi	<i>Tinospora cordifolia</i>	33.33 mg
Haldi	<i>Curcuma longa</i>	33.33 mg
Mullethi	<i>Glycyrrhiza glabra</i>	33.33 mg
Triphala	<i>Embllica officinalis</i>	22.22 mg
	<i>Terminalia chebula</i>	22.22 mg
	<i>Terminalia bellirica</i>	22.22 mg

Useful in :

Increases anti-body forming cells, anti-inflammatory & body resistance to infection, reduces ESR.

Dosage :

1-2 capsules twice daily with luke warm water or as directed by the physician.

Pack : 30 Capsules M.R.P. Rs. 390.00



FEVERACT ANTI PYREXIA SYRUP

FOR FEVER & VIRAL INFECTIONS

ज्वर (बुखार) में उपयोगी

Composition :

Each 10 ml contains:

Sudarshan 500 mg
Neem 500 mg
Kiratatika/Chirayata 250 mg
Guduchi 250 mg
Nagarmotha/Musta 150 mg
Karanj 150 mg
Tulsi 100 mg

Fine Powder of Sanjivani Vati, Laxmi Vilas Ras 25 mg

Dosage :

Children : ½ teaspoonful twice a day.
Adults : 2 teaspoonful twice a day or as directed by the Physician.

Pack : 200 ml M.R.P. Rs. 170.00



PLATOACT CAPSULE

PLATELET ENHANCER

रून में प्लेटलेट्स की संख्या को बढ़ाने में मदद करता है

Composition :

Each capsule contains :

Carica Papaya 300 mg, Giloy 100 mg, Ashwagandha 50 mg, Kiwi Fruit 50 mg

Dosage :

1-2 capsules twice a daily or directed by the physician.

Pack : 10 x 1 x 10 Capsules M.R.P. Rs. 1750.00



AYURVEDIC SOFTGELS



CARTWIN SOFTGEL CAPSULE

कार्टिलेज एंव हड्डी मजबूत करने में सहायक, जोड़ों के दर्द एंव सूजन में लाभकारी

Composition :

Guggul Salai ext. (Boswellia serrata) – 250 mg
Guggul ext. (Balsamodendron mukul) – 80 mg
Sonth ext. (Zingiber officinale) – 80 mg
Surjan ext. (Colchicum luteum) – 70 mg
Lahsun shuddha (Allium sativum) – 40 mg
Curcumin (Curcuma longa) – 125 mg
Chamomilla ext. (Matricaria chamomilla) – 30 mg
Ashwagandha ext. (Withania somnifera) – 30 mg
Sat Puspaa ext. (Peucedanum graveolens) – 20 mg
Rasna ext. (Pluchea lanceolata) – 10 mg
Rosehip – 75 mg

Benefits :

- Promote Cartilage Repair
- Helps reduce Joint Pain & Inflammation
- Promote Healthy Joints

Pack : 10 x 1 x 10 capsule
M.R.P. Rs. 1300.00



DOSAGE : One capsule twice daily or as directed by the physician.

EWON SOFTGEL CAPSULE

शूरिया, फाइन लाइंस, रूखी एंव बेजान त्वचा में उपयोगी

Composition :

Each soft gelatin capsule contains :
Vitamin E
(Natural Wheat Germ Oil) 400 mg.
Excipients q.s.

Dosage : One Capsule daily or as directed by the Physician.



Pack : 10 x 1 x 10 capsule M.R.P. Rs. 1300.00

FLAXSEED OIL SOFTGEL CAPSULE

हृदय रोग, दमनियों में रुकावट एंव रक्त संचार में उपयोगी

Each softgel capsule contains :

Flax Seed 1000 mg
(Linum Usitatissimum) (A natural source of Omega Fatty Acid 3-6-9)

Beneficial in :

- Heart Health • Healthy skin & hair • Helps in reducing cholesterol & fatty liver • Help in preventing cardiovascular diseases
- Helps reduce inflammation

Dosage :

One capsule daily or as directed by the physician.

Pack : 10 x 1 x 10 capsule M.R.P. Rs. 1300.00



HEELSET SOFTGEL CAPSULE

एड़ी एंव तलवे का दर्द, प्लांटर फैसिटिस का दर्द एंव सूजन के लिए

Each 625mg Soft Gelatin Capsules Prepared Out Of:

Payasam (Cow milk)	650ml	Ashwagandha (Withania somnifera-rt)	010.125mg
Tila Thalam (Sesamum indicum seed oil)	300.000mg	Sallaki (Boswellia serrata -ex)	010.125mg
Gandharwa thailam (Ricinus communis seed oil)	025.000mg	Anantamoola (Hemidesmus indicus-rt)	010.125mg
Shunthi (Zingiber officinale-rt)	045.250mg	Parjat (Nyctanthes arbor tristis-rt)	010.125mg
Eranda/shweta (Ricinus communis-rt)	045.250mg	Shalaparni (Desmodium gangeticum-rt)	010.125mg
Punarnava/rakta (Boerhaavia diffusa-rt)	045.250mg	Gokshuru (Tribulus terrestris-rt)	010.125mg
Rasna (Alpinia galanga -rt)	045.250mg	Prushniparni (Uraria picta-rt)	010.125mg
Nirgundi (Vitex nirgundo- sd)	040.225mg	Bruhati (Solanum indicum-rt)	010.125mg
Deodar (Cedrus deodar -ht.wd)	040.225mg	Kantakari (Solanum xanthocarparum-rt)	010.125mg
Laksha (Laccifer lacca -ex)	040.225mg	Bilwa (Aegle marmelos-rt)	010.125mg
Yugapatarka (Bauhinia variegata -bk)	040.225mg	Agnimantha (Premna integrifolia-rt)	010.100mg
Vajralata (Cissus quadrangularis -rt)	040.225mg	Gambhari (Gmelina arborea -rt)	010.100mg
Balamoolam (Sida cordifolia-rt)	025.225mg	Shyonak (Oroxylum indicum-rt)	010.100mg
Sahachara (Strobilanthes heymanus -rt)	025.225mg	Patala (Stereospermum suaveolens)	010.100mg
Guggulu (Commiphora mukul -ex)	025.225mg	Pipali (Piper longum-rt)	010.100mg
Haridra (Curcuma longa -rt)	010.125mg	Guduchi (Tinospora cordifolia-rt)	010.100mg
Chincham (Tamarindus indica -rt)	010.125mg	Ushira (Vetiveria zizanioides-rt)	010.100mg

Benefits :

- Helps to cure heel pain
- Pain due to plantar fasciitis
- Helps reduce swelling

Dosage : One capsule twice daily or as directed by the Physician.

Pack : 10 x 1 x 10 capsule M.R.P. Rs. 1300.00



NERVOACT-CN SOFTGEL CAPSULE

लकवा, चेहरे का लकवा, मिरगी, काठिन्य, शरीर की जकड़न, वक्रिका दर्द (न्यूरोलॉजिया) आदि में उपयोगी।

Each 625mg Soft Gelatin Capsules Prepared Out Of:	Upakunchika (Nigella sativa)	010.500mg
Gokshiram (Cow milk)	Agnimanth (Premna integrifolia)	010.500mg
Gandharwa thailam (Castor oil)	Shyonak (Oroxylum indicum)	010.500mg
Tila thailam (Sesame seeds oil)	Patala (Stereospermum suaveolens)	010.500mg
Jyotishmati (Celastrum paniculatum)	Gambhari (Gmelina arborea)	010.500mg
Balamoolam (Sida cordifolia)	Prushniparni (Uraria picta)	010.500mg
Prasarani (Merremia tridentata)	Shalaparni (Desmodium gangeticum)	010.500mg
Parjatak (Nyctanthes arbor tristis)	Gokshuru (Tribulus terrestris)	010.500mg
Navamalika (Jasminum officinale)	Bruhati (Solanum indicum)	010.500mg
Nirgundi (Vitex nirgundo)	Kantakari (Solanum xanthocarparum)	010.500mg
Vajragandha (Withania somnifera)	Bilwa (Aegle marmelos)	010.500mg
Khurasanika (Hyoscyamus niger)	Kultha (Macrotylema uniflorum)	010.500mg
Deodar (Cedrus deodar)	Yava (Hordeum vulgare)	010.500mg
Sugandhabala (Valeriana wallichii)	Kola (Zizyphus jujuba)	010.500mg
Erandamoola (Ricinus communis)	Shatavari (Asparagus racemosus)	010.500mg
Akkalkarabha (Anacyclus pyrethrum)	Shunthi (Zingiber officinale)	005.500mg
Parjat (Nyctanthes arbor tristis)	Guduchi (Tinospora cordifolia)	005.500mg
Punarnava (Boerhaavia diffusa)	Chandanam (Santalum album)	005.500mg
Rasna (Alpinia galanga)	Sandhava (Rac salt)	002.500mg
Bramhi (Bacopa monnieri)		
Sahachara (Barleria prionitis)		

Pack : 10 x 1 x 10 capsule
M.R.P. Rs. 1350.00



OESTOFLEX SOFTGEL CAPSULE

गठिया, जोड़ों का दर्द, अकड़न और गतिशीलता की कमी में लाभदायक

Each softgel capsule contains :	Lajja (Mimosa pudica)	10.100mg
	Methika (Trigonella foenum graecum)	10.100mg
	Shalaparni (Desmodium gangeticum)	10.100mg
	Gokshuru (Tribulus terrestris)	10.100mg
	Agnimantha (Premna integrifolia)	10.100mg
	Shyonak (Oroxylum indicum)	10.100mg
	Gambhari (Gmelina arborea)	10.100mg
	Patala (Stereospermum suaveolens)	10.100mg
	Prushniparni (Uraria picta)	10.100mg
	Bruhati (Solanum indicum)	10.100mg
	Kantakari (Solanum xanthocarparum)	10.100mg
	Bilwa (Aegle marmelos)	10.100mg
	Daruharidra (Berberis aristata)	2.500mg
	Kutaja (Holarrhena antidysenterica)	2.500mg
	Katuka (Picrorhiza kurroa)	2.500mg
	Patha (Cissampelos pareira)	2.500mg
	Chitraka (Plumbago zeylanica)	2.500mg
	Tila Thailam (Ricinus communis)	125mg
	Tila Thailam (Sesamum indicum)	500mg
	Gokshuru (Cow milk)	q.s.

Pack : 10 x 1 x 10 capsule
M.R.P. Rs. 1300.00



Benefits :

Better arthritis pain, relieves the pain & inflammation common in arthritis, control and recover through everyday actions of your joint and muscle pain.

Dosage :-

One capsule twice a day or as directed by the Physician.

SPINEKAART

SOFTGEL CAPSULE

Composition:-
Each soft gelatin capsules contains 625mg Prepared Out Of:

Gokshiram (Cov milk)	614.240ml	Kantakari (Solanum Xanthocarpum)	14.500mg
Tila Thailam (Sesamum indicum Oil)	562.500ml	Blilva (Aegle Marmelos)	4.500mg
Erandu Thailam (Ricinus communis Oil)	62.500ml	Ajamoda (Apium Graveolens)	10.000mg
Nirgundi (Vitex Nirgundo)	105.250mg	Guduchi (Tinospora Cordifolia)	10.000mg
Parijatka (Nycanthus arbor tristis)	45.250mg	Indriyamoola (Citrullus Colocynthis)	10.000mg
Bala (Sida Cordifolia)	45.250mg	Shatavari (Asparagus Racemosus)	4.500mg
Prasarani (Merremia Tridentata)	45.250mg	Vidari (Pueraria Tuberosa)	4.500mg
Rasna (Alpinia Galangal)	45.250mg	Shilajit (Asphaltum)	4.500mg
Desdar (Cedrus Deodar)	25.000mg	Kulatha (Dolichos Biflorus)	4.500mg
Upakunchika (Nigella Sativa)	25.000mg	Chandanam (Santalum Album)	4.500mg
Ashwagandha (Withania Somnifera)	25.000mg	Yava (Hordeum Vulgare)	4.500mg
Punarnava (Boerhaavia Diffusa)	25.000mg		
Erandam (Ricinus Communis)	15.000mg		
Sahacharam (Barleria Prionitis)	15.000mg		
Arjuna (Termination Arjuna)	14.500mg		
Shalaparni (Desmodium Gangeticum)	14.500mg		
Gokshura (Tribulus Terrestris)	14.500mg		
Agnimantha (Premna Integrifolia)	14.500mg		
Shyonak (Oroxylum Indicum)	14.500mg		
Gambhari (Gmelina Arborea)	14.500mg		
Patala (Stereospermum Suaveolens)	14.500mg		
Pushmiparni (Uratia Picta)	14.500mg		
Bruhathi (Solanum Indicum)	14.500mg		

Pack : 10 x 1 x 10 capsule M.R.P. Rs. 1300.00

DEGENERATIVE DISC & OSTEOARTHRITIS JOINT STRESS UPPER AND LOWER BACK PAIN स्पॉन्डिलाइटिस, निचली पीठ के दर्द व जोड़ों की सूजन में उपयोगी

Useful in : Degenerative Disc & Osteoarthritis Joint Stress Upper And Lower Back Pain



SB-PRIM 1000

SOFTGEL CAPSULE

स्वस्थ त्वचा, पी.एम.एस., मेनोपॉज एवं हार्मोनल संतुलन में उपयोगी

Each softgel capsule contains :
Evening Primrose Oil 1000 mg
Wheat Germ Oil 10 mg
(A Natural Source of Vitamin E)

Beneficial in :
• Atopic dermatitis • Rheumatoid Arthritis
• Premenstrual Syndrome (PMS)
• Menopause Symptoms

Dosage : One capsule twice daily or as directed by the physician.



Pack : 10 x 1 x 10 capsule M.R.P. Rs. 1500.00

SUPERACT VITAL 9G

SOFTGEL CAPSULE

Composition :
Each softgel capsule contains :

Apricot Extract	50 mg	Ginger Root Extract	14 mg
Flex Seed Extract	50 mg	Green Coffee Bean Extract	10 mg
Chia Seed Extract	50 mg	Glycyrrhiza Glabra Extract	10 mg
Lycopene	50 mg	Wheat Germ Oil	25 mg
Green Tea Extract	10 mg	Citrus	20 mg
Ginko Biloba	10 mg	Carrot Extract	6.33 mg
Ginseng Extract	42.5 mg	Pumpkin Extract	5 mg
Grape Seed Extract	15 mg	Piperine	5 mg
Garlic Extract	20 mg		
Guggulu Extract	10 mg		
Ginger Root Extract	14 mg		

Useful in : Increase Energy, Support Immunity Mental Performance, Minimize Tiredness & Fatigue

Pack : 10 x 1 x 10 Softgel M.R.P. Rs. 1300.00

INCREASE ENERGY SUPPORT IMMUNITY MENTAL PERFORMANCE MINIMIZE TIREDNESS & FATIGUE

पोषण की कमी, कमजोरी, कमजोर इम्यूनिटी, थकान में उपयोगी एवं मानसिक सतर्कता बढ़ाने में लाभदायक

Recommended Usage : One capsule daily or as directed by the physician.



SUPER-ACT VITAL

SOFTGEL CAPSULE

SOFTGEL CAPSULES OF MULTIVITAMINS, MULTIMINERALS WITH GINSENG मल्टीविटामिन सोफ्टजैल कैप्सूलस

Each softgel capsule contains :

Withania somnifera (Ashwagandha)	125 mg
Glycyrrhiza glabra Linn (Yastimadhu)	30 mg
Asparagus racemosus Wild (Shatavari)	100 mg
Boerhaavia diffusa (Punarnava)	60 mg
Pueraria tuberosa (Vidarikand)	75 mg
Salmalia malabarica (Moch Ras)	25 mg
Eclipta alba (Bhringraj)	25 mg
Embilca officinalis (Amla)	25 mg
Pedalium murex (Gokhru)	25 mg
Terminalia arjuna (Arjun)	30 mg
Ginseng	100 mg
Excipients & Base	q.s.

Recommended Usage : One capsule daily or as directed by the physician.



Pack : 10 x 1 x 10 Softgel M.R.P. Rs. 1250.00

PINGCAL-C PLUS

SOFTGEL CAPSULE

Composition:-
Each soft gelatin capsules contains :

Khatika	200 mg
Mukta Shukti Bhasam	65 mg
Kapardika Bhasam	65 mg
Shankha Bhasam	80 mg
Hadjor Ext.	40 mg
Ashwagandha Ext.	40 mg
Kali Mirch	10 mg

Useful in : Bone strength, Joint flexibility, and manage calcium deficiency using ayurvedic support.

Pack : 10 x 1 x 10 Softgel M.R.P. Rs. 1200.00

CALCIUM + SUPPORTS STRONG BONES, MUSCLE & JOINTS MAGNESIUM + ZINC

Dosage:- One Capsules twice daily or as directed by the Physician.



LIGAVIN

SOFTGEL CAPSULE

USEFUL IN LIGAMENT INJURY

Composition :
Each soft gelatin capsules contains :

Yograj Guggulu	225 mg
Ashwagandha	100 mg
Moringa	50 mg
Rasna	50 mg
Shalaki	50 mg
Ajwain	25 mg

Dosage:- One capsule twice a day or as directed by the Physician.

Useful in : Tendon, Ligament injury, Anti-inflammatory.



Pack : 10 x 1 x 10 Softgel M.R.P. Rs. 1300.00

CERVICAA

SOFTGEL CAPSULE

THE COMPREHENSIVE SOLUTION FOR CERVICAL SPINAL PROBLEMS

Composition:
Each soft gelatin capsules contains 625mg Prepared Out Of:

Gokshiram (Cov milk)	2.500ml	Gambhari (Gmelina arborea)	10.150mg
Tila Thailam (Sesamum indicum oil)	468.750mg	Patala (Stereospermum suaveolens)	10.150mg
Gandharva Thailam (Ricinus communis oil)	156.250mg	Prushniparni (Uratia picta)	10.150mg
Kunjika (Nigella sativa)	105.250mg	Shalaparni (Desmodium gangeticum)	10.150mg
Parijatka (Nycanthus arbor tristis)	45.250mg	Kantakari (Solanum xanthocarpum)	10.150mg
Chandrika (Leptidium sativum)	45.250mg	Shyonak (Oroxylum indicum)	10.150mg
Rasna (Alpinia galangal)	45.250mg	Bruhathi (Solanum indicum)	10.150mg
Methika (Trigonella foenum graecum)	25.250mg	Guggulu (Commiphora wightii)	10.150mg
Balamoolam (Sida cordifolia)	25.250mg	Ajamoda (Apium graveolens)	10.150mg
Sahachara (Strobilanthes heyneanus)	25.250mg	Indravaranu (Citrullus colocynthis)	10.150mg
Yavanika (Hyoscyamus niger)	10.200mg		
Vidari (Pueraria tuberosa)	10.200mg		
Deodar (Cedrus deodar)	10.200mg		
Punarnava (Boerhaavia diffusa)	10.200mg		
Ashwagandha (Withania somnifera)	10.150mg		
Gokshura (Tribulus terrestris)	10.150mg		
Blilva (Aegle marmelos)	10.150mg		
Agnimantha (Premna integrifolia)	10.150mg		

Dosage:- Two Capsules twice daily or as directed by the Physician.

Pack : 10 x 1 x 10 capsule M.R.P. Rs. 1300.00

सरवाईकल के दर्द, गर्दन और कंधों में जकड़न में उपयोगी



EFFERVESCENT TABLETS



GREEN TEA EFFERVESCENT TABLETS

Each effervescent tablet contains :
Green Tea Leaf Extract 500 mg
(Camellia sinensis)

Useful in :
Enhances Immunity, Improves Skin Health,
Helps in weight management,
Boosts Energy and Metabolism

Recommended Dosage :
2 tablet per day

Pack : 16 Tablets M.R.P. Rs. 295.00



STONEACT EFFERVESCENT TABLETS

EFFECTIVE TREATMENT FOR KIDNEY STONE
गुर्दों की पथरी के लिये रामबाण दवा

Each effervescent tablet contains :

Pashanbhed Ghan Satva	60 mg
Varun Ghan Satva	60 mg
Kulthi Ghan Satva	60 mg
Gokhru Ghan Satva	60 mg
Jav Kshar	40 mg
Moolikshar	40 mg
Apamarg Kshar	40 mg
Shweta Parpati	40 mg
Hazrul Yahood Bhasam	q.s.
Sajjikhar	q.s.
Nimbu Satva	q.s.

A Natural & Tasty way to dissolve & expel calculi

Recommended Dosage :
Dissolve 1 Tablet in half a glass of warm water (150ml) drink as soon as it has completely dissolved in the water twice daily.

Pack : 16 Tablets M.R.P. Rs. 425.00



APPLE CIDER VINEGAR EFFERVESCENT TABLETS

Each effervescent tablet contains :
Apple Cider Vinegar spray dried powder 500 mg
equivalent to two teaspoons of Liquid Apple Cider Vinegar (Seb sheet ras sidhu)

Useful in :
Enhances skin health, Improves digestion,
Boosts Metabolism, Helps maintain healthy skin.

Recommended Dosage :
2 tablet per day

Pack : 16 Tablets M.R.P. Rs. 350.00



HERBAL COSMETICS



CHARCOAL DEEP CLEAN FACEWASH

REJUVENATING & REMOVES EXCESS OIL

Composition : Each 100 gm contains :

Activated Charcoal 2%, Aloe vera (Aloe barbadensis) 3%, Haldi Ext. (Curcuma longa) 2%, Tulsi Ext. (Ocimum sanctum) 2%, Neem Ext. (Azadirachta indica) 2%, Papaya Ext. (Carica papaya) 2%, Base q.s.

CHARCOAL FACEWASH evacuates excessive oil and purified skin

- It wipes out bacteria, dirt, impurities, toxins caused due to excessive exposure of pollution
- It helps in opening up the clogged pores and removing whiteheads.

Direction for use :

Moisten face, Apply small quantity of SBHERBALS CHARCOAL FACEWASH and gently work up lather using circular motion. Wash off and pat dry.

Pack : 100 ml M.R.P. Rs. 190.00



YOSHINE[®] UBTAN FACEWASH

HELPS CLEANSSES & CLARIFY COMPLEXION

त्वचा को मुलायम एवं रंग साफ करने में उपयोगी

YouShine Face Wash is a skin clarifying face wash that contains haldi chandan extract, pea sprout extract which helps to draw out impurities and give your skin a smooth texture. It also helps to removes dirt without disturbing your skin's natural oil balance and brightens skin, restores natural radiance of the skin. The face wash help to manage your skin health, and prevents pollutants and free radicals from your skin.

Direction for use :

Moisten face, Apply small quantity of SBHERBALSUBTAN FACEWASH and gently work up lather using circular motion. Wash off and pat dry.

Pack : 60 ml M.R.P. Rs. 170.00



HALDI CHANDAN, NEEM TULSI ALOEVERTA, CHARCOAL SOAP & NATURAL ROSE

Direction for use : Wet the body with water completely and then apply generously, let it work for minimum 20 seconds and rinse with water perfectly.



Pack : 100 gm

NEEM TULSI ALOEVERTA ACNE & OIL CONTROL FACEWASH

Composition : Each 100 gm contains :

Yashtimadhu (Glycyrrhiza glabra) 3g, Orange (Citrus sinensis) 1.5 g, Neem (Azadirachta indica) 0.25 g, Amalaki (Embllica officinalis) 0.30 g, Haridra (Curcuma longa) 1 g, Tulsi (Ocimum sanctum) 0.20 g, KhasKhas (Vetiveriaziz anioides) 0.25 g, Aloeverta (Aloe barbadensis) 0.25 g, Tea Tree Oil 0.05 ml, Gulab Arka (Rosa centifolia) 2ml, Base q.s.

SBHERBALS NEEM TULSI ALOEVERTA FACEWASH

is an excellent skin cleanser, removes excess oil, anti-bacterial, anti-septic, anti-inflammatory, treats acne, boils & ulcers. Improves general skin health & immunity.

Direction for use :

Moisten face, Apply small quantity of SBHERBALS NEEM TULSI ALOEVERTA FACEWASH and gently work up lather using circular motion. Wash off and pat dry.

Pack : 100 ml M.R.P. Rs. 180.00



KESH 101 HAIR CLEANSER

ANTI HAIR FALL SHAMPOO

बालों को झड़ने से बचाने एवं नये बाल उगाने में उपयोगी, बालों को रेशमी व चमकदार बनाने में उपयोगी

KESH 101 Hibiscus and Aloeverta Shampoo is filled with rich vitamins and enzymes which helps in repairing dead skin cells of scalp. This shampoo acts as a great conditioner and leaves your hair all smooth and shiny. It promotes hair growth, prevents itching on the scalp, reduces dandruff and nourishes your hair.

INGREDIENTS :

Each 5ml contains :
Hibiscus 2.5%, Aloeverta 2%, Reetha 2%, Amla 1.5%
Green Tea 1.5%, Fenugreek 1.5%, Liquorice 1.2%
Banyan 1%, Rose 1%, Base q.s.

HOW TO USE : Gently massage Kesh 101 Shampoo into wet hair and scalp with fingertips to work into a lather. Rinse thoroughly with water.

Pack : 200 ml M.R.P. Rs. 255.00



RED ONION SHAMPOO WITH CONDITIONER

ENRICHED WITH ALOEVERTA, AMLA, NEEM OIL FOR LONG HAIR SHAMPOO HAIR REGROWTH TREATMENT

Composition :

Onion extract (Allium cepa) Sd. 2g, Aloeverta (Aloe barbadensis) Lf. 1.5g, Pulp Amla extract (Embllica officinalis) Fr. 2g, Neem Oil (Azadirachta indica) Lf. 1g, Brahmi extract (Bacopa monnieri) 1g, Curry leaf extract (Murraya Koenigii) Lf. 1g

Benefits :

- Deeply nourishes hair & scalp
- Strengthens the hair follicles
- Prevents hair fall & alopecia
- Prevents premature greying of hair
- Prevent split ends

HOW TO USE :

Gently massage Red Onion Shampoo into wet hair and scalp with fingertips to work into a lather. Rinse thoroughly with water.

Pack : 200 ml M.R.P. Rs. 349.00



ALOEVERA GEL

GEL

Composition :

Each 100g contains :

Aloe Vera Juice 96.30%
Perfumed Gel Base q.s.

Benefits :

FOR SKIN : Moisturizes and hydrates dry skin, reduces signs of aging, removes dark circles and puffiness, fights acne and pimples, eliminates dead skin cells.

FOR HAIR : Reduces dandruff, softens hair and helps in hair re-growth.

How to use :

FOR SKIN - Apply Aloe Vera Gel to the areas that need soothing and nutrition including face, arms, legs and scalp.

FOR HAIR - Massage Aloe Vera Gel on scalp and hair and wash off after a couple of hours for soft and fizz free hair.

Pack : 120 gm M.R.P. Rs. 160.00

SOOTHING AND HYDRATING GEL

शुद्ध एलोवेरा (घृतकुमारी) जैल



ANTISEPTIC CREAM

MULTIPURPOSE CREAM FOR MINOR CUTS, BURNS, WOUNDS, RASHES, ITCHING

एंटी सेप्टिक क्रीम

Composition :

Each 10g contains of :

Neem (Azadirachta indica) 2%, Aloe vera (Aloe barbedensis) 2%,
Nirgundi (Vitex negunda) 2%, Lemon Oil (Citrus limon) 1.25%,
Cream base q.s., Anhydrous Lanolin q.s.

Indications :

Minor Cuts, Winburn, Chipper Lips, Rough Elbows, Cracked Feet,
Softens Skin, Sunburn & Itching

How to use : Apply cream with fingertip on the affected area & rub gently 2-3 times a day.

Pack : 20 gm M.R.P. Rs. 85.00



AYURVEDIC JUICES



APPLE CIDER VINEGAR

एपल साईडर विनेगर

Each 10ml contains :
 Seb Sheet Ras Sidhu (Apple Cider Vinegar) (Pyrus malus) Frt 8 ml
 Garlic (Allium sativum) Blb 1 ml
 Ginger (Zingiber officinale) Rzm 1 ml

Useful in :

- Helps Burn Excess Fat • Helps Boost Immunity
- Helps Improve Skin Health

Dosage : 10-20 ml of **SBHERBALS APPLE CIDER VINEGAR** in half a glass of water twice daily. Honey and Lemon Juice can be added as flavour.

Pack : 500ml. M.R.P. Rs. 530.00

WITH GINGER AND GARLIC



AMLA JUICE

• GOOD FOR IMMUNITY
• EFFECTIVE ANTIOXIDANT

INGREDIENTS :

Pure Amla Juice (Fr.) 99.8%
 (Embelica officinalis)
 Preservatives 0.2%

Benefits

- Prevents premature greying and anti-hairfall
- Improves eye sight • Excellent blood purifier
- Rich in Vitamin C and acts as a power booster
- Strengthens the liver and increases appetite
- Anti ageing • Keeps blood pressure under control
- Makes body slim and smart
- Increases haemoglobin levels
- Effective in skin diseases

DOSAGE :

10 to 20ml twice a day with water/honey or as directed by the physician.

Pack : 500 ml M.R.P. Rs. 280.00



GILOY JUICE

NATURAL HEALING JUICE

COMPOSITION :-

Each 10 ml contains water extract of :-
 गिलोय Tinospora cordifolia 1000 mg Stem API
 घृतकुमारी Aloe barbadensis 500 mg Pulp API
 हरड Terminalia chebula 500 mg Fruit API
 अश्वगंधा Withania somnifera 200 mg Root API
 शतावरी Asparagus racemosus 50 mg Root API
 Colour :- Natural q.s.

Approved preservatives used

Diabetes, Chronic Fever, Typhoid,

Dengue Fever, Generalised Tonic

Dosage :- 10 to 15 ml Twice or Thrice a day or as directed by the physician

Pack : 500 ml M.R.P. Rs. 280.00



NEEM KARELA JAMUN JUICE

SKIN CARE, CHOLESTEROL & DIABETIC SPECIAL

Ingredients

Each 10ml. Contains liquid Ext OF:

Neem (Azadirachta indica) lt. 20 mg
 Karela (Momordia charantia) Ft. 100 mg
 jamun (Syzygium cumini) Ft. 500 mg
 Ashwagandha (Withania somnifera) Rs: 100 mg
 Gudmar (Gymnema sylvestree) lt. 200 mg
 Preservative added q.s.

Benefits

- Controls blood sugar level.
- Enhance the body defence mechanism.
- Helps in digestion and strengthens the digestive system.
- It is useful in constipated stools and disease like hemorrhoids (piles).
- It helps in destroying worms present in gastro intestinal tract.
- It works as an appetizer.

Dosage : 10 to 20ml twice a day with water or as directed by the dietician.

Pack : 500 ml M.R.P. Rs. 280.00



ARJUN ASHWAGANDHA JUICE

KEEP YOUR HEART & BODY HEALTHY

हृदय एंवम शरीर को शक्ति वर्धक एंव बलदायक बनाने में सहायक

Composition :

Each 10ml contains aqueous extracts of :
 Ashwagandha (Withania somnifera) 5 g
 Arjuna (Terminalia arjuna) 5 g

Benefits of Arjuna

- Helps in removal of heart blockage
- Helps maintain healthy cholesterol and Tryglycerides levels
- Helps maintain healthy heart function and blood pressure
- Purifies blood and improves skin glow
- Helps improve body energy levels
- Helps boost immunity
- Helps in relieving mental stress
- Helps overcome weakness and lethargy
- Helps in promoting long lasting stamina

Direction for use : 25 to 30 ml twice daily mixed with water or as directed by the Physician.

Pack : 500 ml M.R.P. Rs. 290.00



NIRGUNDI JUICE

NATURALLY HELPS REDUCE BODY AND JOINT PAINS (BACK PAIN, SHOULDER PAIN, KNEE PAIN, HANDS AND LEG PAIN , MUSCLE CRAMPS)

वात - व्याधी नाशक एंव दर्द निवारक

Composition :

Each 10ml. Contains extract derived from :

Latin Name	Part Used
Nirgundi (Vites Nigundo)	1700 mg.
Haldi (Curcuma Longa)	400 mg.
Harsinger (Nyctanthes arbor tritis)	400 mg.
Tulsi (Ocimum Sanctum)	300 mg.

Benefits of Nirgundi

- Naturally helps reduce body and joint pains (back pain, shoulder pain, knee pain, hands and leg pain , muscle cramps)
- Rich in anti inflammatory properties, subdues swelling and inflammation
- Helps control burning sensation in hands and feet
- Helps strengthen bones and muscles

Direction for use : 25 to 30 ml twice daily mixed with water or as directed by the Physician.

Pack : 500 ml M.R.P. Rs. 280.00



MAKOY PUNARNAVA JUICE

लीवर दोष एवं
अन्दरूनी सूजन के लिए

Composition :

Each 10ml. Contains:

Punarnava	1000 mg	Giloy	100 mg
Rohtki	1000 mg	Harad	100 mg
Chirayata	650 mg	Bahera	100 mg
Ashwagandha	750 mg	Amla	100 mg
Makoy	500 mg	Kutki	100 mg
Pitpada	500 mg	Sugar	q.s.
Daruhaldi	100 mg	Permitted Preservatives & Colours used.	

Helps in :

- Viral Hepatitis
- Alcoholic Liver Disease
- Loss of Appetite
- Hyper Acidity Gas
- Liver Damage
- Jaundice
- Constipation
- Indigestion
- Vomiting
- Anaemia
- Anorexia
- Stomach Ache

Dosage : 20ml twice a day with half glass of water or as directed by the physician.

Pack : 500 ml M.R.P. Rs. 360.00



YOUSLIM JUICE

Each 10ml of the slimming juice contains Triphala (Haritaki, Bibhitaki, Amalaki) 500 mg (Terminalia chebula, Terminalia bellirica, Phyllanthus emblica), Vrikshamla (Garcinia indica) 400 mg, Garcinia Cambogia (Garcinia cambogia) 300 mg, Guggul (Commiphora mukul) 300 mg, Kalmegh (Andrographis paniculata) 200 mg, Methi (Trigonella foenum-graecum) 200mg, Punarnava (Boerhavia diffusa) 150 mg, Guduchi (Tinospora cordifolia) 150 mg, Shilajit (Asphaltum punjabium) 100 mg, Aloe vera (Aloe barbadensis) 100 mg, Kutki (Picrorhiza kurroa) 50 mg, Coffee Bean (Coffea arabica) 100 mg, and Saunth (Dry Ginger) (Zingiber officinale) 100 mg, combined in a high quality base (Q.S.)

Useful in :

- Helps to burn body fat
- Boosts metabolism for higher energy
- Maintains healthy cholesterol levels
- Strengthens digestive health
- Controls appetite and maintains body shape

How to use :

Shake well before use.
Take 2 tsp (20ml) of juice.
Mix it well with 1 glass (200ml) of water.
Drink twice a day before meal.

Pack : 500 ml M.R.P. Rs. 395.00



SEA BUCKTHORN & AMLA JUICE

CONTAINS
OMEGA 3,6,7 & 9

Composition :

Each 5ml contains :

Seabuckthorn	95%
Amla	5%

Preservative : Sodium Benzoate, Potassium Sorbate.
Other Ingredients : Citric Acid, Xanthan Gum.

Helps in :

- Boosts Heart Health
- Naturally Rich in Omega 3,6,7 & 9
- Promotes Digestion
- Promotes Liver Health
- Supports Immune Function
- Neutralises Free Radicals
- Relieves Constipation

Dosage :

20ml twice a day with half glass of water or as directed by the physician.

Pack : 500ml. M.R.P. Rs. 530.00



MIX BERRIES

NATURAL INGREDIENTS
IMMUNITY BOOSTER
ANTIOXIDANTS

Ingredients :

Strawberry, Blackberry, Raspberry, Roseberry, Cherry, Goji berry, Goseberry, Red Current berry, Cranberry, Acaiberry, Mulberry, Choaeberry, Bilberry. Preservative : Sodium Benzoate, Potassium Sorbate. Other Ingredients : Citric Acid, Xanthan Gum.

Helps in :

- Improves Digestion
- Boosts Metabolism
- Promotes Heart Health
- Improves Kidney Health
- Protects Against Cancer
- Lowers Cholesterol Levels
- Strengthens Bone and Teeth
- Promotes Strong Blood Vessels
- Treats UTI Infections

Dosage :

20ml twice a day with half glass of water or as directed by the physician.

Pack : 500 ml M.R.P. Rs. 530.00



NONI JUICE

WITH THE BENEFITS OF
GARCINIA & WHEATGRASS

Composition	Latin Name	Part Used
Noni Ras	(Morinda citrifolia)	Fr. 95%
Vrikshamla Ras	(Garcinia cambogia)	Fr. 3%
Wheatgrass Ras	(Triticum aestivum)	Lf. 2%

Benefits Of Vrikshamla

- Powerful appetite suppressant
- Excellent metabolism booster
- Reduces stomach acidity
- Stops lipid cellular damages
- Improves serotonin levels
- Positive stimulant for brain

Dosage :

Twice a day (20ml) or as directed by the physician.

Benefits Of Noni Fruit

- Aids in reducing risk of Type-II diabetes
- Stimulates release of digestive enzymes
- Prevents cerebral ischemic stress
- Speeds up healing of wounds
- Improves cerebral blood flow & memory functions
- Protects against cancer & liver diseases

Pack : 500 ml M.R.P. Rs. 330.00



ALOEVERA JUICE

COMPLETE DIGESTIVE TONIC

Each 100ml contains :

Ghrit Kumari (Aloe barbadensis) Lv.	98%
Excipients	q.s.

Benefits

- Soothes arthritis pain
- Hydrates the skin
- Reduces high blood pressure & cholesterol
- Lubricates the digestive tracts
- Helpful in curing eczema, burns, inflammation & wounds
- Detoxifies the body
- Stabilizes blood sugar
- Supports immune system
- Boosts physical endurance

Direction for use :

10 to 20ml twice a day half an hour before meal with water or as directed by the physician.

Pack : 500 ml M.R.P. Rs. 280.00



SHEETAL RAS JUICE

ADVANCED
FORMULATION TO CALM
HEAT IN THE BODY

Composition :

Each 5ml contains :

Kutki.....	100 mg
Moringa.....	200 mg
Aloe vera.....	200 mg
Coriander.....	100 mg
Pittapapada.....	100 mg
Indrayava.....	100 mg
Kalamegh.....	100 mg
Parpat.....	100 mg
Mushta.....	100 mg
Tamarind.....	50 mg
Amla.....	100 mg
Asparagus.....	100 mg
Fennel.....	50 mg
Basil.....	200 mg

Dosage :

Twice a day (20ml) or as directed by the physician.

Pack : 500 ml M.R.P. Rs. 320.00



NUTRITION, IMMUNO MODULATOR & GENERAL HEALTH



SUPERACT[®] SYRUP VITAL

HERBAL VITALIZER SYRUP

तनाव, थकान, कमजोरी, उर्जा की
कमी को दूर करने में सहायक

Composition :

Each 10 ml. contains extracts of :

Palak ext. 100 mg, Chukunder ext. 100 mg, Shatavar ext. 100 mg
Ashwagandha ext. 150 mg, Kauch ext. 100 mg,
Arjun ext. 100 mg, Safed mushli ext. 100 mg,
Vidarikand ext. 100 mg, Pipramool ext. 50 mg
Sonth ext. 30 mg, Kali mirch ext. 30 mg, Piper ext. 30 mg,
Loh bhasma soluble 25 mg

Useful in : General debility, malnutrition,
poor weight gain, convalescence and anaemia.
It can also be prescribed in general fatigue.

Dosage : One to Two teaspoons twice a
day or as directed by Physician.

Pack : 200ml M.R.P. Rs. 160.00



SUPERACT[®] SYRUP VITAL

HERBAL VITALIZER SYRUP

तनाव, थकान, कमजोरी, उर्जा की
कमी को दूर करने में सहायक

Composition :

Each 10 ml. contains extracts of :

Palak ext. 100 mg, Chukunder ext. 100 mg, Shatavar ext. 100 mg
Ashwagandha ext. 150 mg, Kauch ext. 100 mg,
Arjun ext. 100 mg, Safed mushli ext. 100 mg,
Vidarikand ext. 100 mg, Pipramool ext. 50 mg
Sonth ext. 30 mg, Kali mirch ext. 30 mg, Piper ext. 30 mg,
Loh bhasma soluble 25 mg

Useful in : General debility, malnutrition,
poor weight gain, convalescence and anaemia.
It can also be prescribed in general fatigue.

Dosage : One to Two teaspoons twice a
day or as directed by Physician.

Pack : 450ml M.R.P. Rs. 320.00



SUPERACT[®] VITAL AYURVEDIC TASTEFUL MALT ENRICHED WITH ASHWAGANDHA SHILAJIT

Each 10 gm contains :

Soyabeej	100 mg.	Shankpushpi	50 mg.
Ashwagandha	100 mg.	Akada	30 mg.
Shatavar	100 mg.	Bael	50 mg.
Vidarikand	100 mg.	Giloy	20 mg.
Munnaka	300 mg.	Arjuna	100 mg.
Safed Musli	50 mg.	Shilajit Shudha	10 mg.
Amla	150 mg.	Gokhru	30 mg.
Kaunch Beej	30 mg.	Liquid Glucose Base	Q.S.
Sounth	40 mg.		
Mulethi	100 mg.		

EXCIPIENTS: SOD.BENZOATE M.P.S. & P.P.S.
FLAVOUR

Dosage: Children 1 teaspoonful 2-3 times a day,
Adults 2 teaspoonful 2-3 times a day or
as directed by the physician

Pack : 400 gm M.R.P. Rs. 350.00



IMPROVES APPETITE •
USEFUL IN ANAEMIA •
GENERAL DEBILITY •
INCREASES IMMUNITY •

रोग प्रतिरोधक क्षमता को बढ़ाने, तनाव,
खून की कमी और शारीरिक कमजोरी
को दूर करने में उपयोगी

CITRICEE VITAMIN C TABLET

NATURAL VITAMIN C
PURE AMLA EXTRACT

विटामिन सी टैबलेट्स

Composition :

Each tablet contains :
Amla Extract 500 mg
Excipients q.s.

Useful in :

Improves Immunity
Anti-inflammatory
Beneficial for Eyes
Relieves Acidity

Amla is a rich source of
Vitamin C.

**Pack : 150 Tablets
M.R.P. Rs. 1050.00/Box**



BRAIN-O-HERB SYRUP

FOR MEMORY AND CONCENTRATION

मस्तिष्क की दुर्बलता और याददाश्त की कमजारी दूर करने में सहायक

Each 10 ml contains :

Brahmi 1000 mg, Shankpushpi 1000 mg, Jyotishmahi 200 mg, Agar (Nervine Booster) 200 mg, Vacha (Rejuvenative for nervous system) 200 mg, Ustkhadus (Specifically reduces Anxiety) 200 mg, Gawarpatha (Natural source of Vitamin B12) 200 mg Sugar q.s., Permitted flavours & colors added.

Useful in :

- Improves concentration • Enhances memory
- Strengthens the mind

Dosage : 10 - 12 ml twice a day or as directed by the Physician.

Pack : 200ml. M.R.P. Rs. 160.00



BRAIN-O-HERB MALT

SHARPENS MEMORY & MIND FOR ALL AGE GROUP

मस्तिष्क की दुर्बलता और याददाश्त की कमजारी दूर करने में सहायक

Each 10 gm contains extracts equivalent to :

Ashwagandha Root	(Withania somifera dunal)	500 mg
Shankpushpi Root	(Convulvulus pluricantis)	400 mg
Brahmi Root	(Centella asiatica)	400 mg
Bhringraj (Faant) Root	(Eclipta alba)	400 mg
Jatamansi Root	(Nardostachys jatamansi)	300 mg
Chandan Wood	(Santalum album)	25 mg
Sugandhbala Root	(Valeriana wallichii)	25 mg
Shuddha Shilajeet	(Asphaltum punjabinum)	10 mg
Mishri		q.s.
Malt Base		q.s.

Benefits :

- Strengthens the mind and builds mental immunity • Improves learning power & retention abilities • Helps boost memory, concentration and mental clarity • Fights stress and anxiety • Helps in treating age related memory loss • Helps reduce mental stress and effective in treating insomnia • Powerful brain and nerve vitalizer • Useful for problems of short term memory loss

Directions for use :

Add required quantity of malt in milk, water or fresh fruit juice.

Age 5 years	: 1 gm
18 and above	: 2 gm
60 years and above	: 1 gm

Pack : 400 gm M.R.P. Rs. 380.00



PANCH TULSI DROPS

IMMUNITY BOOSTER

रोग प्रतिरोधक क्षमता बढ़ाने में मददगार, फेफड़ों को मजबूत करने में सहायक

4 DROPS OF HEALTHY LIFE

Each 10ml Tulsi drops contains liquid extracts of the following ingredients :

Holy Basil 4 ml, Sweet Tulsi 1.2 ml, Van Tulsi 0.8 ml, Tulsi Bhed 0.8 ml, Kapoor Tulsi 0.8 ml, Ashwagandha 0.8 ml, Giloy 0.8 ml, Haridra 0.8 ml, Solubilizer q.s.

Benefits :

- Boosts Immunity • Helps to prevent asthma and all the respiratory disorders • Prevents cold and cough by acting as a natural antibiotic • Helps to lighten our skin tone and fights against Acne • Increases brain's capacity, acts as an anti-depressant • Has abundant antioxidants, reduces uric acid, contains Vitamin C & Vitamin E.

DIRECTIONS FOR USE :

Mix 4 drops in a glass of water/cup of a tea or juice twice a day or as directed by the physician.

Pack : 20ml. M.R.P. Rs. 205.00



DE-ADDICTION



ADDIFREE SYRUP

Composition

Each 10ml contains :	
Ashwagandha (Withania somnifera) Bk.	100 mg
Shankhpushpi (Convolvulus prostratus) Wh.Pl.	125 mg
Brahmi (Bacopa monnieri) Wh. Pl.	125 mg
Tulsi (Ocimum tenuiflorum) Wh. Pl.	125 mg
Bach (Acarus calamus) Rz.	25 mg
Giloy (Tinospora cordifolia) St.	25 mg
Arjun (Terminalia arjuna) Bk.	25 mg
Amla (Emblica officinalis) Fr.	50 mg
Gokhru (Tribulus terrestris) Fr.	750 mg
Vidarikand (Pueraria tuberosa) Fr.	200 mg
Bhumi Amla (Phyllanthus niruri) Lf.	

Addifree is highly beneficial in De-Addiction. Helps quit addiction gradually by eliminating all craving for alcohol/nicotin. Prevents liver damage due to alcoholism. No withdrawal symptoms and no side effects.

Dosage : 10 to 15 ml thrice a day or as directed by the physician.

Pack : 200ml. M.R.P. Rs. 240.00

BENEFICIAL IN DE-ADDICTION

शराब, सिगरेट व अन्य नशे छुड़वाने में उपयोगी



ADDIFREE POWDER

Each 10 g powder contains :

Bahera	Terminalia belerica	Frt	1g
Majuphal	Quercus infectoria	Rt	1g
Safed musli	Chlorophytum borivilianum	Rt	1g
Lodhra	Symplocos racemosa	Bk	1g
Supari	Areca catechu	Flr	1g
Kamarkas	Butea fondosa	Ex	1g
Ela	Elettaria cardamomum	Frt	1g
Sugar Candy		q.s.	

Beneficial in :

Quitting Smoking, Alcohol, Tobacco etc.

Usage : One sachet twice a day half an hour before meals or as directed by the physician.

**Pack : 90 gm(30 sachets each 3 g)
M.R.P. Rs. : 1050.00**

HERBAL FORMULA FOR DE-ADDICTION

शराब, सिगरेट व अन्य नशे छुड़वाने में उपयोगी



Thank
You

FOR CHOOSING US...



Plot No. 213 Basement, UGF Industrial Area, Phase 1, Chandigarh - 160002

Mob : +91 921 611 8262, 981 315 4064,

Email : sbherbals.in@yahoo.com | **Website :** www.sbherbals.in

NUTRACEUTICALS

ARGISET SACHET

Nutritional Information :

Nutrients each serving of per

Sachet of 5g contains Approx. :

Energy	13.1kcal
Carbohydrate	0.29g
Protein	0.0245g
Fat	0.0012g

Each 5g of Sachet contains : RDA%

L-Arginine	3g	**
Proanthocyanidins	75mg	**
Folic Acid	0.2mg	66.66

Dosage : As directed by the Dietician.

Pack : 20 Sachet of 5 gm
M.R.P. Rs. 58.00 per sachet

L-Arginine, Proanthocyanidins and Folic Acid Sachet



BONSET-CQ TABLETS D3

Nutritional information :(Approx.)

Energy value	2.0kcal
Fat	0.230g
Carbohydrate	0.02g
Protein	0.34g
Sugar	0.000g
Diatary Fibre	0.000g

Composition :

Each film coated tablet contains :	RDA%
Cissus quadrangularis	500mg
Calcium	500mg
Cholecalciferol	600IU
Cyanocobalamin	2.2mcg
Omega-3	150mg

Recommended Usage & Duration:

1 or 2 Tablets daily after meal or as directed by the Dietician.

Pack : 10 x 1 x 10 Tablets M.R.P. Rs. 85.00 per Strip

Cissus quadrangularis, Calcium, Cholecalciferol, Cyanocobalamin & Omega-3 Tablets



PINGCAL-D3 CHEWABLE TABLETS

Nutritional Information (Approx. Values) :

Each Per Serving of tablet contains :

Energy Value	0.52Kcal
Carbohydrates	0.01g
Fat	0.000gm
Cholesterol	0.000gm

Chewable tablet contains : (Approx.)	RDA%
Coral Calcium	500mg 50
Vitamin D3	250I.U. 41.66
Vitamin B12	1mcg 40
Zinc	7.5mg 44.11
Excipients	q.s.

Useful in :

- Strengthens Bones
- Strengthens Joints
- Improves Calcium Absorption

Direction for use : As directed by the dietician.

Pack : 30 Chewable Tablets M.R.P.: 250.00 (Vanilla Flavour)

CORAL CALCIUM, VITAMIN B12, VITAMIN D3 & ZINC CHEWABLE TABLETS



GUT SPHERE CAPSULES MAX

Nutritional Information :

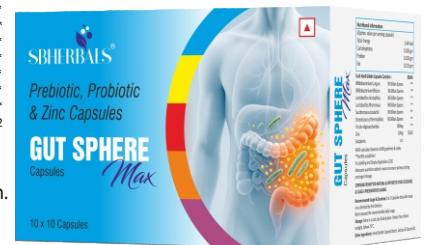
(Approx. value per serving capsule)	3.44 Kcal
Total Energy	0.106 gm
Carbohydrates	0.206 gm
Protein	0.235 gm
Fat	

Each Hard Giletin Capsule Contains :	RDA%
Bifidobacterium Longum	90 Billion Spores **
Bifidobacterium Bifidum	90 Billion Spores **
Lactobacillus Acidophilus	90 Billion Spores **
Lactobacillus Rhamnosus	90 Billion Spores **
Saccharomyces boulardii	90 Billion Spores **
Streptococcus thermophilus	90 Billion Spores **
Fructo-oligosaccharides	100mg **
Zinc	10mg 58.82
Excipients	q.s.

Direction for use : 1 or 2 capsules daily after meal or as directed by the dietician.

Pack : 10 x 10 Capsules (Alu-Alu)
M.R.P. Rs. 120.00 per strip

PREBIOTIC, PROBIOTIC & ZINC CAPSULES



NEENDSET-M CHEWABLE TABLETS

Composition :

Each Chewable Tablet Contains :	RDA%
Melatonin	5 mg **
Magnesium	150 mg **
L-Theanine	100 mg **
Passion Flower	200 mg **

Benefits :

- Supports Better Sleep
- Reduces Stress & Anxiety
- Improves Sleep Quality
- Promotes Relaxation

Dosage : 1-2 Tablets daily after dinner or as directed by the Dietician.

Pack : 10 x 15 Tablets M.R.P. Rs.195.00 per strip

MELATONIN 5MG, MAGNESIUM 150MG, L-THEANINE 100 MG & PASSION FLOWER 200 MG CHEWABLE TABLETS



OMEGASEC-E SOFTGEL

Nutritional Information:

(Approx. values per serving/softgel capsules)	5.64kcal
Energy	0.052g
Carbohydrates	0.34g
Protein	0.076g
Fat	0.246g
Saturated Fatty Acid	0.135g
Poly Unsaturated Fatty Acid	0.372g
Monounsaturated Fatty Acid	0g
Trans Fatty Acid	0g
Cholesterol	0g
Sugar	0.003g
Dietary Fibre	0.000g

Each softgel capsule contains :	RDA%
Wheat Germ Oil	80mg **
Omega-3	150mg **
Tocopherol(Vitamin E)	400mcg **
Biotin	10mg **
Excipients	q.s.

Dosage : 1 or 2 capsules daily after meal or as directed by the Dietician.

Pack : 10 x 1 x 10 Capsules M.R.P. Rs. 190.00 per strip

OMEGA-3, WHEAT GERM OIL, BIOTIN & NATURAL VITAMIN E SOFTGEL CAPSULES



SB-CART FORTE TABLETS

Each film coated tablets contains :

Salai Guggul(Boswellia serrata)Ex.	200mg
Glucosamine Sulphate	250mg
Rosehip Extract	125mg
Exipients	q.s.

RDA%

Recommended Usage & Duration:

1 or 2 Tablets daily after meal or as directed by the Dietician.

Pack : 10 x 10 Tablets

M.R.P. Rs.: 160.00 per strip

SALAI GUGGUL, GLUCOSAMINE SULPHATE, ROSEHIP EXTRACT TABLETS



SB-HERBAL DHA SOFTGEL CAPSULE

EPA - DHA - EXTRA STRENGTH

Nutritional Information: (Approx. values per serving/ softgel capsules)

Energy	5.64 Kcal
Carbohydrates	0.286 gm
Protein	0.278 gm
Fat	0.375 gm
Saturated Fatty Acid	0.246 gm
Poly Unsaturated Fatty Acid	0.135 gm
Mono Unsaturated Fatty Acid	0.372 gm
Trans Fatty Acid	0 gm
Cholesterol	0 gm

Two Softgel Capsule Contains:	RDA%
Fish Oil	1000mg **
Omega 3 Fatty Acid	660mg **
EPA	360mg **
DHA	240mg **
Other Omega 3 Fatty Acid	60mg **

Pack : 30 Softgel Capsules M.R.P. Rs. 550.00

ADVANCED OMEGA-3 FISH OIL

Supports Cognitive Function Supports Healthy Heart, Joints & Skin



SBRON-CAL TABLETS

Ferrous Bisglycinate, L-Methylfolate & Cyanocobalamin Tablets Calcium Citrate, DHA With Multivitamin & Multimineral Tablets

Nutritional Information : (Approx. value per serving/Tablet)		Nutritional Information : (Approx. value per serving/Tablet)	
Energy	2.685kcal	Energy	0.54kcal
Carbohydrates	0.600gm	Carbohydrates	0.1gm
Protein	0.150gm	Protein	0.000gm
Fat	0.205gm	Fat	0.000gm

Tablet 2 :	RDA%	Tablet 1 :	RDA%
Each film coated tablet contains :		Each film coated tablet contains :	
Calcium Citrate	1000mg 100	Ferrous Bisglycinate	100mg 100
Eq. to elemental Calcium	400IU 66.66	L-Methylfolate(Folate)	200mcg 66.66
Vitamin D3(Ac Lichen)	150mg 75	Cyanocobalamin	2.2mcg 100
Omega 3(EPA+DHA)	1.4mg 100	Exipients	q.s.
Vitamin B1(Thiamine HCL)	1.5mg 75		
Vitamin B2(Riboflavin)	1.5mg 78.94		
Vitamin B6(Pyridoxine HCL)	30mg 75		
Vitamin B12(Biotin)	14mg 100		
Vitamin B3(Niacinamide)	5mg 100		
Calcium-D-Pantothenate	50mg 9.09		
Magnesium Oxide	50mg 35.71		
Eq. to elemental Magnesium	15mg 88.23		
Zinc	2500IU 100		
Beta Carotene	1mg 58.82		
Cupric Oxide	7.5mg 100		
Eq. to Copper			
D-Alpha Tocopherol			
Exipients	q.s.		

Dosage : 1 or 2 Tablets daily after meal or as directed by the dietician.

Pack : 10 x 20 Tablets M.R.P. Rs. 195.00 per strip



MEDLIV PRO LIVER PROTEIN

SPECIALISED DIET FOR IMPROVED LIVER FUNCTION

- INDICATIONS**
- Non-Alcoholic Fatty Liver Disease & Alcoholic Fatty Liver Disease
 - Drug Induced Hepatotoxicity
 - Hepatitis • Liver Cirrhosis
 - Minimal Hepatic Encephalopathy

- BENEFITS**
- Protects the liver cells from damage, improves liver function, and liver cell regeneration
 - Improves bile flow and prevents muscle protein catabolism in liver disorder patients
 - Reduces fatty liver risks.
 - Supports digestion
 - Boosts energy & metabolism
 - Calorie rich supplement serving 400 kcal/100ml serving
 - Sugar free as stevia is used as sweetener

Pack : 200 gm M.R.P. Rs. 480.00



SB-COLLAGEN POWDER

COLLAGEN PEPTIDE, GLUTATHIONE, GRAPE SEED EXTRACT, L-LYSINE WITH VITAMIN E POWDER

Each 10 gm powder contains :	RDA%
Glutathione	500mg **
Collagen Peptide type I	500mg **
Grape Seed Extract	50mg **
Vitamin E(As α Tocopherol)	7.5mg 100
L-Lysine	2mg **

Recommended Usage :

As directed by the dietician.

Pack : 200 gm

M.R.P. Rs. 850.00 (Orange Flavour)



SB-BION FORTE TABLETS

Tablets of Vitamin B Complex with B12

Each film coated tablet contains :	RDA%
Thiamine Mononitrate	1.8mg 100
Riboflavin	2.5mg 100
Pyridoxine Hydrochloride	2.4mg 100
Cyanocobalamin	2.2mcg 100
Nicotinamide	18mg 100
Calcium Pantothenate	5mg **
Exipients	q.s.

Dosage : 1 or 2 Tablets daily after meal or as directed by the dietician.

Pack : 25 x 1 x 30 tablet
M.R.P. Rs. 70.00 per strip



YOUSHINE-G TABLETS

L-Glutathione, Alpha Lipoic Acid, Grape Seed Extract, Licorice Extract, L-Ascorbic Acid, Niacinamide & Vitamin E Tablets

Nutritional Information :	
Energy	2.4kcal
Carbohydrate	0.02gm
Fat	0gm
Protien	0gm

Each film coated tablet contains :	RDA%
L-Glutathione	500mg **
L-Ascorbic Acid	80mg 100
Vitamin E 50%	10mg 100
Alpha Lipoic Acid	100mg **
Grape Seed Extract	100mg **
Licorice Extract	50mg **
Niacinamide	18mg 100
Exipients	q.s.

Dosage : 1 or 2 Tablets daily after meal or as directed by the dietician.

Pack : 10 x 1 x 10 Tablets
M.R.P. Rs. 650.00 per strip



KESH-101 AG TABLETS FOR GREY HAIR

COLOUR RESCUE SUPPLEMENT FOR HAIR

DAY & NIGHT COMBO KIT

Each film coated tablet contains :	Content per serving	RDA%
Grape Seed Extract 95%	80 mg	**
Purple Tea Extract (Camellia sinensis)	100 mg	**
Rosemary Extract (Rosmarinus officinalis)	20 mg	**
Onion Seed Extract (Allium cepa)	20 mg	**
Astaxanthin	4 mg	**
Beta-Carotene	4 mg	**
Magnesium (As Magnesium Sulphate)	150 mg	34.09
Manganese (As manganese sulphate)	4 mg	100
Copper (As Copper sulphate)	1.7 mg	100
L-Taurine	200 mg	**
N-Acetyl L-Cysteine	120 mg	**
L-Cysteine	4 mg	**
L-Glutamine	20 mg	**
Quercetin	50 mg	**
Inositol	50 mg	**
Exipients	q.s.	**

Dosage : As directed by the dietician.

Pack : 3 x 10 Tablet
M.R.P. Rs. 2450.00 per kit

